

# New Features in InfoMaker® 10.5

Document ID: DC00358-01-1050-01

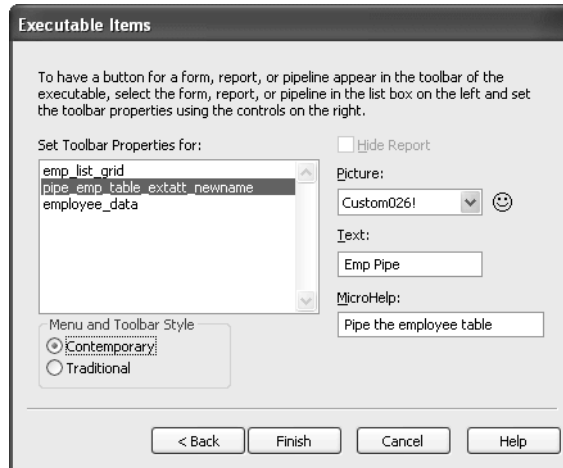
Last revised: March 2006

Topic	Page
New look for applications	2
Report and form enhancements	3
TreeView report presentation style	3
Rich Text enhancements	4
Decimal support in InfoMaker expressions	6
Drop-down calendar option	7
Autosize height property on all report bands	8
New property to suppress group headers on page breaks	9
New property to hide blue outline in Print Preview	9
Database connectivity enhancements	9
Adaptive Server Enterprise 15 support	9
Support for Sybase Adaptive Server temporary tables	11
Support for Microsoft SQL Server 2005	11
NCharBind database parameter for Oracle	11

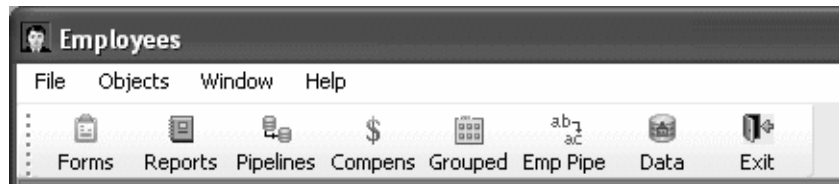
## New look for applications

Many of the icons in the InfoMaker® user interface have been updated, and the new icons are available for use in your applications.

When you build an application in the Library painter, you can choose to use the traditional style for menus and toolbars or the new contemporary style. You select the style on the Executable Items page in the Create Executable wizard.



The contemporary style looks like this:



# Report and form enhancements

InfoMaker 10.5 includes the new TreeView presentation style, autosize height for all report bands, and other enhancements.

## TreeView report presentation style

The presentation style you select for a report determines the format InfoMaker uses to display the report in the Design view. InfoMaker 10.5 includes a new report wizard that lets you create a report using a TreeView presentation style. With the TreeView presentation style, you can group hierarchical data and display the data in collapsed or expanded format. The TreeView report style cannot be used with the Web report.

You use the TreeView report wizard to create a TreeView report with one TreeView level. You add additional levels to the TreeView by selecting Rows>Create TreeView Level from the menu bar.

This sample TreeView report uses the department and employee tables in the EAS Demo database and has two TreeView levels. The first level is the department name. The second level is the city where each employee resides:

Employee ID	First Name	Last Name	Status	Salary	Start Date	Health Insurance	Sex
<b>Finance</b>			Total Employees: 5				
<b>Marketing</b>			Total Employees: 4				
Concord							
1576	Scott	Evans	Active	\$68,940.00	12/30/1999	<input checked="" type="checkbox"/> Health Insurance	<input type="radio"/> M <input type="radio"/> F
207	Jane	Francis	Active	\$53,870.00	08/04/1998	<input checked="" type="checkbox"/> Health Insurance	<input type="radio"/> M <input type="radio"/> F
<b>Needham</b>							
<b>Waltham</b>							
<b>R &amp; D</b>			Total Employees: 13				
Belmont							
Burlington							
453	Andrew	Rabkin	Active	\$64,500.00	12/13/1992	<input checked="" type="checkbox"/> Health Insurance	<input type="radio"/> M <input type="radio"/> F
316	Lynn	Pastor	Active	\$74,500.00	10/24/1992	<input checked="" type="checkbox"/> Health Insurance	<input type="radio"/> M <input type="radio"/> F
Concord							
445	Kim	Lull	Active	\$87,900.00	12/13/1992	<input checked="" type="checkbox"/> Health Insurance	<input type="radio"/> M <input type="radio"/> F
Houston							
Lexington							
529	Dorothy	Sullivan	Active	\$67,890.00	08/03/1993	<input checked="" type="checkbox"/> Health Insurance	<input type="radio"/> M <input type="radio"/> F
Milton							
Natick							
Waltham							
Wellesley							
<b>Sales</b>			Total Employees: 6				
<b>Shipping</b>			Total Employees: 1				

When you use a TreeView report, you click the state icon to expand or collapse a node. The state icon is a plus (+) sign when the node is collapsed and a minus (-) sign when it is expanded. When a node is expanded, connecting lines display by default to show more detail and indicate how the parent data connects with child data. When a node is collapsed, only the parent data displays and the detail data does not display.

For more information      For more information, see “TreeView presentation style” in the *User’s Guide*.

## Rich Text enhancements

RTF is a standard for specifying formatting instructions and document content in ASCII documents. An editor that supports RTF interprets a document’s instructions and displays the text with formatting.

InfoMaker 10.5 uses a new rich text editor to support the RichText report presentation style. The new editor brings a modern look and includes some new features, including the ability to name and use formatting styles. Most of the properties and functions of rich text objects in previous versions of InfoMaker continue to be supported by the new rich text editor. When you import rich text objects from previous versions of InfoMaker, any obsolete properties and functions are ignored.

The new rich text editor supports a subset of the RTF specification version 1.6.

The new rich text editor features are described in the following sections:

- Rich text editor user interface changes
- RichText report presentation style changes

### Rich text editor user interface changes

Rulers, toolbars, and status bars

Like the earlier rich text editor, the new editor includes a toolbar and ruler that you can hide or display at design time or runtime. If you enable the PopMenu property on a rich text report, end users of your InfoMaker applications can also opt to display or hide the toolbar or ruler.

The new editor includes a status bar that you can enable at design time or runtime, or that the users of your rich text applications can opt to display or hide. The rich text editor no longer includes a separate tab bar. End users of a rich text control can set tabs for the control in the Tabs dialog box or directly on the ruler.

Rich text editor toolbar items

The toolbar for the rich text editor has a contemporary flat-style look. It includes drop-down lists for formatting style and zoom percent, and toolbar buttons for adding bullets or sequential numbers to paragraphs in the rich text control.



Users can set document properties in text format dialog boxes that they open by double-clicking on blank areas of the toolbar.

To open this dialog box	Double-click this area on the toolbar
Styles	Space in front of the Style drop-down list or the space trailing it
Font	Space in front of any of the font-related fields—font face drop-down list, font size drop-down list, or character attributes (bold, italic, underline)—or the space trailing them
Paragraph	Space in front of or trailing the alignment buttons
Bullets and Numbering	Space in front of or trailing the bullet and numbering buttons
Tabs	Space in front of or trailing the tab and paragraph buttons

Viewing page margins

The new editor lets you view headers and footers at the same time as the text body. When you opt to include headers and footers, the editor displays each page of text with borders for the top and bottom margins, and with gaps between adjoining pages. This gives the rich text report a three-dimensional appearance.

You can decide whether to allow headers and footers at design time only. If you do not allow headers and footers, the pages of text display as a continuous sheet without borders or margins, although you can still see separate pages in the print preview mode.

Dialog box changes

The Styles dialog box and the Bullets and Numbering dialog box are new to InfoMaker 10.5. Users can create, modify, or delete styles in the Styles dialog box. The Font dialog box now includes line position items (normal, superscript, subscript). The Paragraph dialog box adds indent and distance-setting capabilities. In earlier versions of InfoMaker, the Tab dialog box was included in the Paragraph dialog box, but it is now separate.

## RichText report presentation style changes

In InfoMaker 10.5, the Preview view of the Report painter for a RichText report is “WYSIWYG” (what you see is what you get) and read-only. When you set content in Detail view for the report header and footer, the Preview view displays the header and footer at the same time as the report row details. In previous versions of InfoMaker, you were required to open the Print Preview view to preview the document body and page margins simultaneously.

With the focus in the Preview view of the Report painter, you can still select the File>Print Preview menu item to preview the document before it is sent to the printer. Since the preview is WYSIWYG, the panel to control margins in the Print Preview view has been removed. In previous builds of InfoMaker, the panel for the page margins also included buttons to scroll through the pages of the report document. In InfoMaker 10.5, you must press the Page Up and Page Down keys to change pages in the Print Preview view.

When you place focus in the Preview view for a report with headers and footers, you also enable the Design>Header/Footer menu item. Selecting this menu item opens the Select Band To Activate dialog box. Radio buttons in this dialog box prompt you to select a band to activate. After you click OK, focus changes to the band in the Preview view that corresponds to the radio button that you select.

Input fields in the new rich text editor are always multiline-capable and never size-fixed, so the MultiLine and FixedSize properties for rich text input fields are obsolete. They are no longer assignable from the Report painter.

At runtime, the RichText report also displays in WYSIWYG format—with the headers and footers displaying in the same window as the document body. The toolbar and its related dialog boxes, and the ruler and status bar are also available at runtime. Otherwise, the runtime functionality remains unchanged.

## Decimal support in InfoMaker expressions

Decimal datatypes are supported in reports, but in previous releases of InfoMaker, decimal values were converted to doubles in InfoMaker expressions. InfoMaker 10.5 adds support for decimal values in InfoMaker expressions and new InfoMaker expression functions to support decimal values. You can also use decimal values as retrieval arguments. In InfoMaker 10.5, the decimal datatype supports up to 28 digits.

The following arithmetic operators now return a decimal value if both operands have a datatype of decimal:

Operator	Meaning	Example
+	Addition	Subtotal + Tax
-	Subtraction	Price - Discount
*	Multiplication	Quantity*Price
/	Division	Discount/Price

If either operand is not a decimal, the returned value is converted to a double datatype. The exponentiation operator (^) continues to return a double.

Relational operators that operate on numeric values (including =, >, <, <>, >=, and <=) can take decimal operands. The precision of the decimal operand is maintained in comparisons.

The following functions return a decimal datatype if their arguments are decimals: Sum, CumulativeSum, Avg, Median, First, Last, Max, Min, Large, Small, Var, VarP, Mod, Mode, Abs, Case, If.

The following new functions return a decimal result instead of a double: CrosstabAvgDec, CrosstabMaxDec, CrosstabMinDec, and CrosstabSumDec.

The new Dec function converts a string to a decimal. You can also append the letter D in upper- or lowercase to identify a number as a decimal constant in a report expression. For example, 2.0d and 123.456789012345678901D are treated as decimals.

Decimal and Decimal array have been added to the list of types in the Specify Retrieval Arguments dialog box.

For descriptions of the new functions, see the *User's Guide* or the online Help.

## Drop-down calendar option

The drop-down calendar option is available for use on any column in a form with an EditMask, and a Date, DateTime, or TimeStamp datatype. The DDCalendar EditMask property option allows for separate selections of the calendar month, year, and date. This option can be set in a check box on the Edit tab of the Form painter Properties view when a column with the EditMask edit style is selected.

You can set the following properties to control the display of the calendar in a script or on the Other page in the Properties view for the column:

Painter option	Property
Drop Align Right	Column.Editmask.ddcal_alignright
CalendarBackColor	Column.Editmask.ddcal_backcolor
CalendarTextColor	Column.Editmask.ddcal_textcolor
CalendarTitleBackColor	Column.Editmask.ddcal_titlebackcolor
CalendarTitleTextColor	Column.Editmask.ddcal_titletextcolor
CalendarTrailingTextColor	Column.Editmask.ddcal_trailingtextcolor

To navigate in the drop-down calendar, a user can:

- Click the arrows in the top corners to move from month to month
- Click the month to display a list of months, then click a month to select it
- Click the year to display a spin control, then use the spin control's arrows to select a year
- Click a date to select the date and close the calendar
- Press the Esc key to close the calendar without changing the selection

## Autosize height property on all report bands

In InfoMaker 10.5, the Height.Autosize property can be set on any band of a report. In earlier InfoMaker releases, this property was available only for the Detail band.

---

### Restrictions on the Height.Autosize property

- The Height.Autosize property is not supported on reports with Graph, Label, OLE, or Rich Text presentation styles.
- Nested report overflow to the next page is supported in Detail bands only.
- Bands cannot be autosized if autosizing would preclude the display of at least one Detail band row per page.

---

Selecting the Height.Autosize property sets the minimum height for the band, allowing it to display the entire content of a picture or a nested report. You can select this property on the General tab of the Properties view for a report band.

## New property to suppress group headers on page breaks

InfoMaker 10.5 includes a new property that lets you suppress the group headers that display in a grouped report after a page break. You can set this property on group header bands only.

When a group listing straddles a page break, all group headers for which you set this property are suppressed. The suppressed headers do not display at the top of the page. When all group headers are suppressed, the group displays as a continuous listing across the straddled pages. However, if the page break coincides with the start of a new group, only headers above the new group header are suppressed.

You enable the suppress group header property by selecting the Suppress Group Header check box in the Properties view for a group header band.

## New property to hide blue outline in Print Preview

By default, a blue line displays in Print Preview mode to show the location of the margins. You can hide this line by clearing the Print Preview Shows Outline check box on the Print Specifications page in the Properties view in the Report painter.

# Database connectivity enhancements

Database connectivity enhancements include support for Adaptive Server® Enterprise version 15 and Microsoft SQL Server 2005.

## Adaptive Server Enterprise 15 support

The native interface for Adaptive Server® Enterprise (*pbsyc105.dll*) can be used with Adaptive Server version 15 and has been enhanced to support several new features in version 15 of Adaptive Server.

### Scrollable cursors

Adaptive Server Enterprise allows both scrollable and nonscrollable cursors, which can be either semi-sensitive or insensitive. “Scrollable” means that you can scroll through the cursor result set by fetching any, or many, rows, rather than one row at a time; you can also scan the result set repeatedly. The `CursorType` database parameter lets you specify the type of cursor to use. For more information, see `CursorType` in the InfoMaker online Help.

**Unintext support** InfoMaker supports the variable-length UniText datatype, which can hold up to 1,073,741,823 Unicode characters (2,147,483,646 bytes). You can use UniText anywhere you use the text datatype, with the same semantics. Unintext columns are stored in UTF-16 encoding, regardless of the Adaptive Server default character set. The Unintext datatype uses UTF-16 encoding to support Unicode text and maps to the PowerScript string datatype.

**Bigint support** InfoMaker supports the 64-bit integer signed and unsigned BigInt datatypes, which map to the PowerScript longlong datatype.

**Unsigned integer datatypes** In addition to the unsigned BigInt datatype, InfoMaker also supports two other unsigned integer datatypes introduced in Adaptive Server 15.0. In this release, the unsigned integer datatypes are supported when connecting to Adaptive Server using the SYC and JDBC drivers.

These datatypes allow you to extend the range of the positive numbers for the existing integer types without increasing the required storage size. That is, the signed versions of these datatypes extend both in the negative direction and the positive direction. However, the unsigned versions extend only in the positive direction. Table 1-2 describes the range of the signed and unsigned versions of these datatypes.

**Table 1: Ranges for signed and unsigned integer datatypes**

Datatype	Range of signed datatypes	Range of unsigned datatypes
BigInt	Whole numbers between $-2^{63}$ and $2^{63} - 1$ (from -9,223,372,036,854,775,808 to +9,223,372,036,854,775,807, inclusive)	Whole numbers between 0 and 18,446,744,073,709,551,615
Int	Whole numbers between $-2^{31}$ and $2^{31} - 1$ (-2,147,483,648 and 2,147,483,647), inclusive	Whole numbers between 0 and 4,294,967,295
SmallInt	Whole numbers between $-2^{15}$ and $2^{15} - 1$ (-32,768 and 32,767), inclusive	Whole numbers between 0 and 65535

**Using Adaptive Server 15** To use Adaptive Server 15, you must install Open Client version 15 on the client computer and set the Release parameter to 15 to establish an Open Client 15 client context. You can specify the Release parameter on the Connection page of the Database Profile Setup dialog box for Adaptive Server or in code:

```
SQLCA.DBParm="Release='15' "
```

The Open Client 15 client context can be used with Adaptive Server 11.x, 12.x, and 15.x.

In InfoMaker 10.5, the SYC driver links to the appropriate version of the client libraries dynamically and the Open Client context is released when all connections are closed. If you open multiple connections, the first Open Client context established is used for all connections. If you need to establish a new Open Client context in the development environment, close all open connections and establish a new connection with the Release parameter set to the context you require.

## Support for Sybase Adaptive Server temporary tables

InfoMaker 10.5 allows you to create and edit temporary tables in the Database painter, SQL painter, or Report painter when you use the InfoMaker SYC native driver to connect to an Adaptive Server database. Temporary tables persist for the duration of a database connection, residing in a special database called “tempdb”.

You add a temporary table to the tempdb database by assigning a name that starts with the # character when you create a new table in a InfoMaker painter. (Temporary tables must start with the # character.)

After you create a temporary table, you can create indexes and a primary key for the table. If you define a unique index or primary key, you can execute INSERT, UPDATE, and DELETE statements for a temporary table. Selecting Edit Data from the pop-up menu of a temporary table retrieves data that you store in that table.

For more information, see “Creating and editing Sybase Adaptive Server temporary tables” in the *User’s Guide*.

## Support for Microsoft SQL Server 2005

The InfoMaker 10.5 ODBC, OLE DB, and ADO.NET drivers have been tested with Microsoft SQL Server 2005. No new features in SQL Server 2005 are supported.

## NCharBind database parameter for Oracle

The NCharBind database parameter for Oracle9i and Oracle 10g improves performance by allowing you to specify whether string variables should be treated as Char or NChar datatypes. The default is to treat string variables as Char datatypes. You can set this parameter on the Transaction tab page in the Database Profile Setup dialog box for Oracle9i and Oracle 10g. For more information, see NCharBind in the *Connection Reference* or the online Help.

