



Installation Guide

Sybase[®] HIPAA Accelerator

6.0

[Windows]

DOCUMENT ID: DC32253-01-0600-01

LAST REVISED: June 2006

Copyright © 1998-2006 by Sybase, Inc. All rights reserved.

This publication pertains to Sybase software and to any subsequent release until otherwise indicated in new editions or technical notes. Information in this document is subject to change without notice. The software described herein is furnished under a license agreement, and it may be used or copied only in accordance with the terms of that agreement.

To order additional documents, U.S. and Canadian customers should call Customer Fulfillment at (800) 685-8225, fax (617) 229-9845.

Customers in other countries with a U.S. license agreement may contact Customer Fulfillment via the above fax number. All other international customers should contact their Sybase subsidiary or local distributor. Upgrades are provided only at regularly scheduled software release dates. No part of this publication may be reproduced, transmitted, or translated in any form or by any means, electronic, mechanical, manual, optical, or otherwise, without the prior written permission of Sybase, Inc.

Sybase, SYBASE (logo), ADA Workbench, Adaptable Windowing Environment, Adaptive Component Architecture, Adaptive Server, Adaptive Server Anywhere, Adaptive Server Enterprise, Adaptive Server Enterprise Monitor, Adaptive Server Enterprise Replication, Adaptive Server Everywhere, Advantage Database Server, Afaria, Answers Anywhere, Applied Meta, Applied Metacomputing, AppModeler, APT Workbench, APT-Build, APT-Edit, APT-Execute, APT-Translator, APT-Library, ASEP, Avaki, Avaki (Arrow Design), Avaki Data Grid, AvantGo, Backup Server, BayCam, Beyond Connected, Bit-Wise, BizTracker, Certified PowerBuilder Developer, Certified SYBASE Professional, Certified SYBASE Professional Logo, ClearConnect, Client-Library, Client Services, CodeBank, Column Design, ComponentPack, Connection Manager, Convoy/DM, Copernicus, CSP, Data Pipeline, Data Workbench, DataArchitect, Database Analyzer, DataExpress, DataServer, DataWindow, DataWindow .NET, DB-Library, dbQueue, Dejima, Dejima Direct, Developers Workbench, DirectConnect Anywhere, DirectConnect, Distribution Director, Dynamic Mobility Model, e-ADK, E-Anywhere, e-Biz Integrator, E-Whatever, EC Gateway, ECMAP, ECRTP, eFulfillment Accelerator, EII Plus, Electronic Case Management, Embedded SQL, EMS, Enterprise Application Studio, Enterprise Client/Server, Enterprise Connect, Enterprise Data Studio, Enterprise Manager, Enterprise Portal (logo), Enterprise SQL Server Manager, Enterprise Work Architecture, Enterprise Work Designer, Enterprise Work Modeler, eProcurement Accelerator, eremote, Everything Works Better When Everything Works Together, EWA, ExtendedAssist, Extended Systems, ExtendedView, Financial Fusion, Financial Fusion (and design), Financial Fusion Server, Formula One, Fusion Powered e-Finance, Fusion Powered Financial Destinations, Fusion Powered STP, Gateway Manager, GeoPoint, GlobalFIX, iAnywhere, iAnywhere Solutions, ImpactNow, Industry Warehouse Studio, InfoMaker, Information Anywhere, Information Everywhere, InformationConnect, InstaHelp, Intelligent Self-Care, InternetBuilder, iremote, irLite, iScript, Jaguar CTS, jConnect for JDBC, KnowledgeBase, Legion, Logical Memory Manager, M2M Anywhere, Mach Desktop, Mail Anywhere Studio, Mainframe Connect, Maintenance Express, Manage Anywhere Studio, MAP, M-Business Anywhere, M-Business Channel, M-Business Network, M-Business Suite, MDI Access Server, MDI Database Gateway, media.splash, Message Anywhere Server, MetaWorks, MethodSet, mFolio, Mirror Activator, ML Query, MobiCATS, MobileQ, MySupport, Net-Gateway, Net-Library, New Era of Networks, Next Generation Learning, Next Generation Learning Studio, O DEVICE, OASIS, OASIS logo, ObjectConnect, ObjectCycle, OmniConnect, OmniQ, OmniSQL Access Module, OmniSQL Toolkit, OpenBridge, Open Biz, Open Business Interchange, Open Client, Open ClientConnect, Open Client/Server, Open Client/Server Interfaces, Open Gateway, Open Server, Open ServerConnect, Open Solutions, Optima++, Partnerships that Work, PB-Gen, PC APT Execute, PC DB-Net, PC Net Library, Pharma Anywhere, PhysicalArchitect, Pocket PowerBuilder, PocketBuilder, Power++, Power Through Knowledge, power.stop, PowerAMC, PowerBuilder, PowerBuilder Foundation Class Library, PowerDesigner, PowerDimensions, PowerDynamo, Powering the New Economy, PowerScript, PowerSite, PowerSocket, Powersoft, PowerStage, PowerStudio, PowerTips, Powersoft Portfolio, Powersoft Professional, PowerWare Desktop, PowerWare Enterprise, ProcessAnalyst, Pylon, Pylon Anywhere, Pylon Application Server, Pylon Conduit, Pylon PIM Server, Pylon Pro, QAnywhere, Rapport, Relational Beans, RemoteWare, RepConnector, Report Workbench, Report-Execute, Replication Agent, Replication Driver, Replication Server, Replication Server Manager, Replication Toolkit, Resource Manager, RFID Anywhere, RW-DisplayLib, RW-Library, SAFE, SAFE/PRO, Sales Anywhere, Search Anywhere, SDF, Search Anywhere, Secure SQL Server, Secure SQL Toolset, Security Guardian, ShareSpool, ShareLink, SKILS, smart.partners, smart.parts, smart.script, SOA Anywhere Trademark, SQL Advantage, SQL Anywhere, SQL Anywhere Studio, SQL Code Checker, SQL Debug, SQL Edit, SQL Edit/TPU, SQL Everywhere, SQL Modeler, SQL Remote, SQL Server, SQL Server Manager, SQL SMART, SQL Toolset, SQL Server/CFT, SQL Server/DBM, SQL Server SNMP SubAgent, SQL Station, SQLJ, Stage III Engineering, Startup.Com, STEP, SupportNow, S.W.I.F.T. Message Format Libraries, Sybase Central, Sybase Client/Server Interfaces, Sybase Development Framework, Sybase Financial Server, Sybase Gateways, Sybase IQ, Sybase Learning Connection, Sybase MPP, Sybase SQL Desktop, Sybase SQL Lifecycle, Sybase SQL Workgroup, Sybase Synergy Program, Sybase Virtual Server Architecture, Sybase User Workbench, SybaseWare, Syber Financial, SyberAssist, SybFlex, SybMD, SyBooks, System 10, System 11, System XI (logo), SystemTools, Tabular Data Stream, The Enterprise Client/Server Company, The Extensible Software Platform, The Future Is Wide Open, The Learning Connection, The Model For Client/Server Solutions, The Online Information Center, The Power of One, TotalFix, TradeForce, Transact-SQL, Translation Toolkit, Turning Imagination Into Reality, UltraLite, UltraLite.NET, UNIBOM, Unilib, Uninull, Unisep, Unistring, URK Runtime Kit for UniCode, Viafone, Viewer, VisualWriter, VQL, WarehouseArchitect, Warehouse Control Center, Warehouse Studio, Warehouse WORKS, Watcom, Watcom SQL, Watcom SQL Server, Web Deployment Kit, Web.PB, Web.SQL, WebSights, WebViewer, WorkGroup SQL Server, XA-Library, XA-Server, XcelleNet, XP Server, XTNDAccess and XTNDConnect are trademarks of Sybase, Inc. or its subsidiaries. 05/06

Unicode and the Unicode Logo are registered trademarks of Unicode, Inc.

All other company and product names used herein may be trademarks or registered trademarks of their respective companies.

Use, duplication, or disclosure by the government is subject to the restrictions set forth in subparagraph (c)(1)(ii) of DFARS 52.227-7013 for the DOD and as set forth in FAR 52.227-19(a)-(d) for civilian agencies.

Sybase, Inc., One Sybase Drive, Dublin, CA 94568.

Contents

About This Book	v
CHAPTER 1 System Requirements	1
Supported platforms	1
Supported Windows platforms	1
Supported UNIX platforms	2
Disk space and memory requirements	2
Prerequisites	2
Software requirements	2
Collecting information	3
Upgrading requirements	3
Contents of the installation directory	3
HIPAA standard maps	4
HIPAA compliance maps	4
Acknowledgement maps	5
Tools	6
Business scenarios	7
User documentation	7
CHAPTER 2 Installing Sybase HIPAA Accelerator	9
Installing Sybase HIPAA Accelerator	9
Locating files	12
Migrating maps	12
Uninstalling or modifying Sybase HIPAA Accelerator	13
Index	15

About This Book

The Sybase® HIPAA Accelerator is an add-on accelerator to the Sybase® Adapter for EDI, EDI Server, and Adapter Suite for EDI products. When used in conjunction with ECTMap, Sybase HIPAA Accelerator allows for the rapid development and deployment of HIPAA-compliant EDI messages per the HIPAA Implementation Guides and Addenda.

Audience

This book is for application engineers and technical consultants who manage Sybase HIPAA Accelerator.

How to use this book

This book describes how to install Sybase HIPAA Accelerator 6.0 and is organized into the following chapters:

- “About This Book” provides a list of available documentation and describes how to access technical support information.
- Chapter 1, “System Requirements” details what is required to install Sybase HIPAA Accelerator.
- Chapter 2, “Installing Sybase HIPAA Accelerator” describes the installation steps.

Related documents

The following documents ship with Sybase HIPAA Accelerator:

- *Sybase HIPAA Accelerator New Features Guide*
- *Sybase HIPAA Accelerator Installation Guide*
- *Sybase HIPAA Accelerator User’s Guide*
- *Release Bulletin for Sybase HIPAA Accelerator*

Additional documents are referred to throughout this and other Sybase HIPAA Accelerator books to provide information that supports this product. See:

- *ECTMap User’s Guide* to understand and build structured information messages
- *ECTMap Reference Guide* to understand and recognize informational messages
- *ECTTP Reference Guide* to use the data transformation engine

Other sources of information

Documentation that supports Sybase HIPAA Accelerator can be found on the Product Manuals web site at <http://www.sybase.com/support/manuals>. Select Sybase HIPAA Accelerator from the drop-down list, and click Go.

Use the Sybase Getting Started CD, the SyBooks CD, and the Sybase Product Manuals Web site to learn more about your product:

- The Getting Started CD contains release bulletins and installation guides in PDF format and may also contain other documents or updated information not included on the SyBooks CD. It is included with your software. To read or print documents on the Getting Started CD, you need Adobe Acrobat Reader, which you can download at no charge from the Adobe Web site using a link provided on the CD.
- The SyBooks CD contains product manuals and is included with your software. The Eclipse-based SyBooks browser allows you to access the manuals in an easy-to-use, HTML-based format.

Some documentation may be provided in PDF format, which you can access through the PDF directory on the SyBooks CD. To read or print the PDF files, you need Adobe Acrobat Reader.

Note Refer to the *SyBooks Installation Guide* on the Getting Started CD, or the *README.txt* file on the SyBooks CD for instructions on installing and starting SyBooks.

- The Sybase Product Manuals Web site is an online version of the SyBooks CD that you can access using a standard Web browser. In addition to product manuals, you will find links to EBFs/Maintenance, Technical Documents, Case Management, Solved Cases, newsgroups, and the Sybase Developer Network.

To access the Sybase Product Manuals Web site, go to Product Manuals at <http://www.sybase.com/support/manuals/>.

- Infocenter is an online version of SyBooks that you can view using a standard Web browser. To access the Infocenter Web site, go to Sybooks Online Help at <http://infocenter.sybase.com/help/index.jsp>.

Sybase certifications on the Web

Technical documentation at the Sybase Web site is updated frequently.

❖ Finding the latest information on product certifications

- 1 Point your Web browser to Technical Documents at <http://www.sybase.com/support/techdocs/>.

- 2 Click Certification Report.
- 3 In the Certification Report filter select a product, platform, and timeframe and then click Go.
- 4 Click a Certification Report title to display the report.

❖ **Finding the latest information on component certifications**

- 1 Point your Web browser to Availability and Certification Reports at <http://certification.sybase.com/>.
- 2 Either select the product family and product under Search by Base Product; or select the platform and product under Search by Platform.
- 3 Select Search to display the availability and certification report for the selection.

❖ **Creating a personalized view of the Sybase Web site (including support pages)**

Set up a MySybase profile. MySybase is a free service that allows you to create a personalized view of Sybase Web pages.

- 1 Point your Web browser to Technical Documents at <http://www.sybase.com/support/techdocs/>.
- 2 Click MySybase and create a MySybase profile.

**Sybase EBFs and
software
maintenance**

❖ **Finding the latest information on EBFs and software maintenance**

- 1 Point your Web browser to the Sybase Support Page at <http://www.sybase.com/support>.
- 2 Select EBFs/Maintenance. If prompted, type your MySybase user name and password.
- 3 Select a product.
- 4 Specify a time frame and click Go. A list of EBF/Maintenance releases displays.

Padlock icons indicate that you do not have download authorization for certain EBF/Maintenance releases because you are not registered as a Technical Support Contact. If you have not registered but have valid information provided by your Sybase representative or through your support contract, click Edit Roles to add the “Technical Support Contact” role to your MySybase profile.

-
- 5 Click the Info icon to display the EBF/Maintenance report, or click the product description to download the software.

Conventions

This book uses the following typographic conventions:

Item	Description
Code	SQL and program code is displayed in a mono-spaced (fixed-width) font.
User entry	Text entered by the user is shown in bold serif type.
<i>emphasis</i>	Emphasized words are shown in italic.
<i>file names</i>	File names are shown in italic.
database objects	Names of database objects, such as tables and procedures, are shown in sans serif type in print, and in italic online.
<i>sybase\bin</i>	A backward slash (“\”) indicates cross-platform directory information. A forward slash (“/”) applies to information specific only to UNIX. Directory names appearing in text display in lowercase unless the system is case sensitive.
File > Save	Menu names and menu items are displayed in plain text. The angle bracket indicates how to navigate menu selections, such as from the File menu to the Save option.
parse put get	The vertical bar indicates <ul style="list-style-type: none">• Options available within code• Delimiter within message examples
segment	Bold text indicates a glossary term.

If you need help

Each Sybase installation that has purchased a support contract has one or more designated people who are authorized to contact Sybase Technical Support. If you cannot resolve a problem using the manuals or online help, please have the designated person contact Sybase Technical Support or the Sybase subsidiary in your area.

System Requirements

About this chapter

This chapter describes what is required to install and run Sybase HIPAA Accelerator.

Contents

Topic	Page
Supported platforms	1
Disk space and memory requirements	2
Prerequisites	2
Contents of the installation directory	3

Supported platforms

Sybase HIPAA Accelerator is built on top of the EDI product set, ECTMap and ECRTP, and runs on ECTMap version 4.0.2 or higher. The platform support and requirements information are the same for Sybase HIPAA Accelerator as for ECTMap.

Note The 275 and 277RQ maps released in Sybase HIPAA Accelerator 6.0 require ECTMap 4.2.6 or higher.

Any ODBC-compliant database that supports auto-increment fields is required for logging and trade partner management.

Supported Windows platforms

Maps are verified to run on all platforms where ECRTP runs on Windows:

- Windows® 2000 Service Pack 4 or higher
- Windows XP Professional Service Pack 1 or higher

Supported UNIX platforms

Maps built using Sybase HIPAA Accelerator also run on the following UNIX platforms using ECRTP:

- Sun™ OS 5.7 and 5.8
- HP-UX 11i
- IBM AIX 5.1

Disk space and memory requirements

Windows operating systems require a total of 175 MB space and 64KB memory allocations:

Requirement	Size
HIPAA compliance maps	127812 KB
HIPAA standards	25200 KB
Sybase HIPAA Accelerator tools	68 KB
Business tools	924 KB
Minimum RAM (as specified for ECTMap)	64 KB

Prerequisites

This section defines the prerequisites for installing and running Sybase HIPAA Accelerator.

Software requirements

If you intend to modify and test the maps and set up trading partner agreements, you need the following software:

- ECTMap 4.0.2 or higher
- ECTMap 4.2.6 or higher for 275 and 277RQ maps

- EC RTP (version associated with E CMap release)

Note Any ODBC-compliant database that supports auto-increment fields is required for logging and trade partner management.

Collecting information

Before beginning the installation, verify the following:

- You have administrative rights to the computer.
- There is sufficient disk space for your calculated needs.

Upgrading requirements

If you are upgrading from a previous Sybase HIPAA Accelerator release, be sure to uninstall the older version first.

While it is not required, Sybase recommends that you make backup copies of the maps you created in your current version of Sybase HIPAA Accelerator. See the *E CMap User's Guide* for information on the Copy Map command.

Also see the *Sybase HIPAA Accelerator User's Guide* for information on upgrading maps (with rules) and importing cross-reference tables from one map to another.

Contents of the installation directory

Your Sybase HIPAA Accelerator product CD contains the files described in this section.

Note The default Sybase HIPAA Accelerator 6.0 installation path is different from earlier releases. Files previously installed to *C:\Program Files\nnsy\HIPAA* are now located at *C:\Program Files\Sybase\HIPAA60*.

Sybase HIPAA Accelerator 6.0 does not install a Programs menu shortcut.

HIPAA standard maps

HIPAA transaction standard maps control the protocol and content for exchanging claims, inquiries, and miscellaneous transactions between health care entities.

Note HIPAA standard maps are inbound only.

Sybase HIPAA Accelerator includes standard maps for each X12/HIPAA transaction. See Table 1-1 for a list of the subfolder names that contain the standard maps, which are located at *C:\Program Files\Sybase\HIPAA60\Standards*.

Table 1-1: Inbound standard maps

Inbound standard	Description
270	Eligibility, Coverage or Benefit Inquiry
271	Eligibility, Coverage or Benefit Information
275	Additional Information to Support Health Care Claim or Encounter
276	Health Care Claim Status Request
277	Health Care Claim Status Notification
277Request	Health Care Claim Request for Additional Information
278Request	Health Care Services Request for Review
278Response	Health Care Services Response to Request
820	Payment Order/Remittance Advice
834	Benefit Enrollment and Maintenance
835	Health Care Claim Payment/Advice
837Dental	Health Care Claim: Dental
837Institutional	Health Care Claim: Institutional
837Professional	Health Care Claim: Professional

HIPAA compliance maps

Sybase HIPAA Accelerator includes compliance maps for each X12/HIPAA transaction.

Inbound maps

Inbound maps use an EDI message as input to create application data. You receive EDI messages from your trading partners.

Outbound maps

Outbound maps use application data to create an EDI message. The EDI message is the output of the map, and it is generally sent from your company to your trading partner.

Table 1-2 lists the subfolder names that contain Sybase HIPAA Accelerator compliance maps, which are located at *C:\Program Files\Sybase\HIPAA60\Maps*.

Table 1-2: HIPAA compliance maps

Compliance Maps	Description
270	Eligibility, Coverage or Benefit Inquiry
271	Eligibility, Coverage or Benefit Information
275	Additional Information to Support Health Care Claim or Encounter
276	Health Care Claim Status Request
277	Health Care Claim Status Notification
277RQ	Health Care Claim Request for Additional Information
278RP	Health Care Services Response to Request
278RQ	Health Care Services Request for Review
820	Payment Order/Remittance Advice
834	Benefit Enrollment and Maintenance
835	Health Care Claim Payment/Advice
837D	Health Care Claim: Dental
837I	Health Care Claim: Institutional
837P	Health Care Claim: Professional
FAMaps	Subdirectory for functional acknowledgement maps

Rules spreadsheets

Within the maps directory, you will also find rules spreadsheets for the 275 and 277RQ maps at *C:\Program Files\sybase\HIPAA60\maps\275* and *C:\Program Files\sybase\HIPAA60\maps\277RQ*, respectively.

These spreadsheets document the rules and Implementation Guide conditions and requirements in the maps. Use these spreadsheets to help identify and resolve issues.

Acknowledgement maps

997 Functional Acknowledgement map

The input to a 997 map is the log file created by the inbound map that requested the Functional Acknowledgement. To create a correct 997, you must use either an ODBC log or an expanded text log in the inbound map requesting the 997. If you used a short text log, the 997 will be created, but it will be incorrect.

TA1 Interchange Acknowledgement map

A TA1 interchange acknowledgement is used to indicate whether a functional acknowledgement is expected back from the receiver of a transaction set. If it is, the TA1 writes certain information to the log during mapping that enables it to process the functional acknowledgement. The TA1 does not guarantee anything about the correctness or completeness of the contents of the ISA envelope – it merely acknowledges that it was received. A TA1 is normally used in test environments to verify the routing of documents.

Table 1-3 lists the functional acknowledgement map names, which are located at *C:\Program Files\Sybase\HIPAA52\Maps\FAMaps\4.0* and *C:\Program Files\Sybase\HIPAA52\Maps\FAMaps\4.2*.

Table 1-3: Acknowledgement maps

Map	Description
<i>997INBND</i>	ODBC-compliant log/inbound reconciliation
<i>997ODBCA</i>	ODBC-compliant log/ALL trading partner
<i>997ODBCT</i>	ODBC-compliant log/specific trading partner
<i>997XLGA</i>	Expanded text log/ALL TradePartner
<i>997XLGTP</i>	Expanded text log/specific trading partner
<i>LOGUPDATE</i>	ODBC or expanded text log/log persistence
<i>TA1_UPDATE</i>	ODBC log/inbound reconciliation any-to-any
<i>TA1ODBCA</i>	TA1 log/ALL trading partner
<i>TA1ODBCT</i>	TA1 log/specific trading partner
<i>TA1XLG</i>	Expanded text log/in memory

Tools

Sybase HIPAA Accelerator includes a utility, *XrefImport.exe*, that lets you import cross-reference tables from one map to another help you manage compliance maps and external code sets. This tool is located at *C:\Program Files\Sybase\HIPAA60\Tools*.

See the *Sybase HIPAA Accelerator User's Guide* for more information.

Business scenarios

The *\Business_Scenario* folder contains examples and test data that illustrate various scenarios users might encounter when filing claims. Using the 270 as an example, which verifies that a provider's service is a covered benefit, a 270 business scenario document includes information associated with the transaction, such as payer, provider, subscriber, trace number, and data string.

These files are located at *C:\Program Files\Sybase\HIPAA60\Business_Scenarios*.

User documentation

The *Release Bulletin for Sybase HIPAA Accelerator* and the *Sybase HIPAA Accelerator Installation Guide* are available on the Getting Started CD and on the Sybase Product Manuals web site. See "Other sources of information" on page vi.

Installing Sybase HIPAA Accelerator

About this chapter

This chapter describes the steps to install Sybase HIPAA Accelerator on Windows.

Topics

Topic	Page
Installing Sybase HIPAA Accelerator	9
Locating files	12
Migrating maps	12
Uninstalling or modifying Sybase HIPAA Accelerator	13

Installing Sybase HIPAA Accelerator

Sybase HIPAA Accelerator installs to the following default directory:
C:\Program Files\Sybase\HIPAA60.

If you have made custom changes to the existing maps, you need to apply your changes to 6.0 maps. See the *ECMap User's Guide* for instructions.

❖ Installing Sybase HIPAA Accelerator

If you are upgrading from a previous Sybase HIPAA Accelerator release, you must uninstall the older version first using the Control Panel > Add or Remove Programs option.

- 1 Insert the installation CD into the drive.

If Autorun is enabled, the install wizard loads automatically. If you disabled Autorun, use Windows Explorer or My Computer to navigate to the directory of your installation CD and double-click *Setup.exe*.

The installation program starts.

- 2 Click Next at the Setup/Welcome screen.

- 3 Click the License Agreement scroll bar and select your location; for example, US and Canada.
- 4 Read the license agreement and click I accept to proceed with the installation.
- 5 Click Next to accept the default destination folder *C:\Program Files\Sybase*. Alternatively, browse to another directory.

When the next screen displays, all Sybase HIPAA Accelerator features (Standards, Maps, Business Scenarios, and Tools) are selected by default.

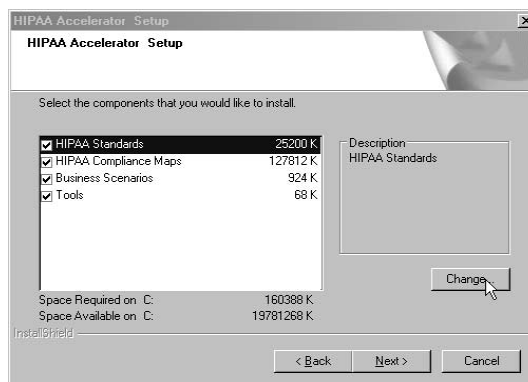
Note Maps and Standards are the core of Sybase HIPAA Accelerator. Do not clear them unless you are sure that you will not send or receive that type of transaction.

- 6 Choose *one* of the following:
 - To install all features, click **Next** and proceed to Step 7.
 - To skip the installation of a feature, clear the checkbox (for example, Business Scenarios), click Next, and proceed to Step 7.

Note Maps and Standards are the core of Sybase HIPAA Accelerator. Do not clear them unless you are sure that you will not send or receive that type of transaction.

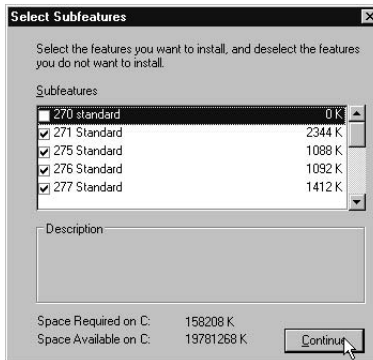
If you require only a subset of the supplied maps or standards (for example, you do not need the 270 standard):

- a Highlight HIPAA Standards and click Change.



The Select Subfeatures window displays.

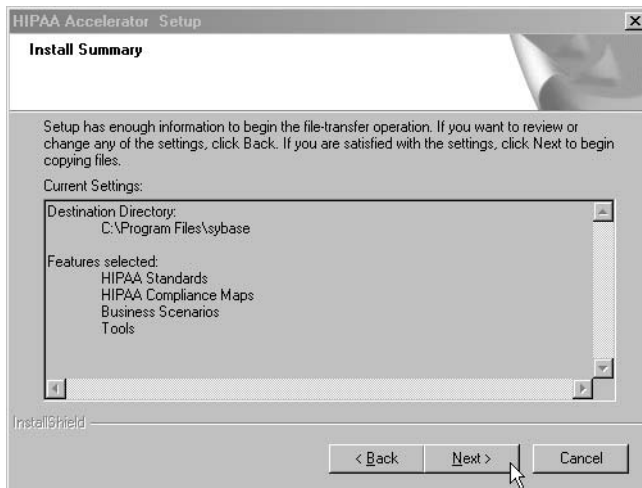
- b Clear the appropriate subfeature, such as the 270 Standard. Only the selected items will be installed.



- c Click Continue to return to the Select Features window.
- d If you have finished modifying the install with the subfeatures you want, click Next to proceed to the Install Summary screen.

At this point you can choose to remove additional subfeatures, such as from Maps.

Note Business Scenarios and Tools cannot be broken down into subfeatures.



- 7 Click Next to proceed with the installation or Back to change your selections.
- 8 When the InstallShield Wizard Complete window displays, click Finish.

After the installation is complete, refer to the *Sybase HIPAA Accelerator User's Guide* for instructions on setting up and running transactions using the Sybase HIPAA Accelerator 6.0 compliance maps.

See also

Refer to the ECTMap documentation for more detailed usage instructions. Go to Product Manuals at <http://www.sybase.com/support/manuals/>.

Locating files

InstallShield installs data to the following default directories:

- Sybase HIPAA Accelerator business scenarios at *C:\Program Files\Sybase\HIPAA60\Business_Scenarios*
- HIPAA compliance maps at *C:\Program Files\Sybase\HIPAA60\Maps*
- HIPAA functional acknowledgement maps at *C:\Program Files\Sybase\HIPAA60\Maps\FAMaps\4.0* and *C:\Program Files\Sybase\HIPAA60\Maps\FAMaps\4.2*
- HIPAA standard maps at *C:\Program Files\Sybase\HIPAA60\Standards*
- HIPAA tools at *C:\Program Files\Sybase\HIPAA60\Tools*

Migrating maps

To migrate or upgrade your maps to version 6.0, modify the map name in the trading partner database for the new map.

For example, for a 278 request, change the map name from *HIPAA_278RQ_4010_51* to *HIPAA_278RQ_4010_60*.

For additional instructions on upgrading maps with rules and importing cross-reference tables from one map to another, see the *Sybase HIPAA Accelerator User's Guide* and the *ECTMap User's Guide*.

Uninstalling or modifying Sybase HIPAA Accelerator

If you need to repair or modify Sybase HIPAA Accelerator; for example, you want to install different subfeatures or the Sybase HIPAA Accelerator books, which you eliminated during the initial install, run the installation disk again.

After using InstallShield to remove Sybase HIPAA Accelerator, you must manually remove the *HIPAA60* folder.

Index

A

- acknowledgement maps
 - 997 5
 - TA1 6
- administrative rights 3
- ALL TradePartner 6
- applying custom changes 9

B

- business scenarios, location of 7

C

- collecting information 3
- compliance maps 4, 12
- contents of installation directory 3
- custom changes, applying 9

D

- database
 - ODBC compliant 1, 3
- default install directory
 - Sybase HIPAA Accelerator 9
- disk space requirements
 - compliance maps 2
 - ECS database 2
 - standard maps 2
 - tools 2
 - user documentation 2
 - Windows 2
- documentation, Sybase HIPAA Accelerator 12

E

- ECMap 1, 3, 9, 12
- ECRTP 1

F

- functional acknowledgement maps 12

H

- HIPAA
 - compliance maps 12
 - standard maps 12
- HIPAA Accelerator requirements 2

I

- inbound maps 4
- information, collecting 3
- installation directory
 - acknowledgement maps 5, 6
 - business scenarios 7
 - compliance maps 4
 - contents 3
 - default 9
 - files 12
 - standard maps 4
- installation files, locating 12
- installing Sybase HIPAA Accelerator 9–12

L

- locating installation files 12
- logging, ODBC requirements 1, 3

M

- maps
 - applying custom changes 9
 - compliance 4, 12
 - functional acknowledgement 12
 - HIPAA standard 4, 12
 - inbound 4
 - migrating 12
 - outbound 5
 - supported platforms 2
 - updating 12
- memory requirements
 - ECMap 2
 - RAM 2
 - Windows 2
- migrating maps 12
- modifying Sybase HIPAA Accelerator 13

O

- ODBC requirements
 - logging 1, 3
 - trading partners 1, 3
- ODBC-compliant databases 1, 3
- outbound maps 5

P

- platforms, supported 1, 2
- prerequisites 2
 - disk space 3
 - software 2

R

- required software 2
- requirements
 - administrative rights 3
 - disk space 3
 - ECMap 3
 - software 2
 - Sybase HIPAA Accelerator 2
 - upgrading 3

- Windows disk space 2
- Windows memory 2
- rights, administrative 3

S

- selecting subcomponents 11
- software
 - upgrading 3
- software requirements
 - ECMap 2
 - ECRTP 2
- standard maps 4, 12
- subcomponents, selecting 11
- supported platforms 1, 2
 - UNIX 2
 - Windows 1
- Sybase HIPAA Accelerator
 - modifying 13
 - uninstalling 13
- system requirements 1–3

T

- TA1 maps 6
- trading partners, ODBC requirements 1, 3

U

- uninstalling Sybase HIPAA Accelerator 13
- UNIX, supported platforms 2
- updating maps 12
- upgrading software 3
- user documentation, location of 7

W

- Windows, supported platforms 1