

SYBASE®

SybStore Tutorials: Mobile Development

## **Sybase WorkSpace**

1.5

DOCUMENT ID: DC00491-01-0150-01

LAST REVISED: June 2006

Copyright © 2005-2006 by Sybase, Inc. All rights reserved.

This publication pertains to Sybase software and to any subsequent release until otherwise indicated in new editions or technical notes. Information in this document is subject to change without notice. The software described herein is furnished under a license agreement, and it may be used or copied only in accordance with the terms of that agreement.

To order additional documents, U.S. and Canadian customers should call Customer Fulfillment at (800) 685-8225, fax (617) 229-9845.

Customers in other countries with a U.S. license agreement may contact Customer Fulfillment via the above fax number. All other international customers should contact their Sybase subsidiary or local distributor. Upgrades are provided only at regularly scheduled software release dates. No part of this publication may be reproduced, transmitted, or translated in any form or by any means, electronic, mechanical, manual, optical, or otherwise, without the prior written permission of Sybase, Inc.

Sybase, SYBASE (logo), ADA Workbench, Adaptable Windowing Environment, Adaptive Component Architecture, Adaptive Server, Adaptive Server Anywhere, Adaptive Server Enterprise, Adaptive Server Enterprise Monitor, Adaptive Server Enterprise Replication, Adaptive Server Everywhere, Advantage Database Server, Afaia, Answers Anywhere, Applied Meta, Applied Metacomputing, AppModeler, APT Workbench, APT-Build, APT-Edit, APT-Execute, APT-Translator, APT-Library, ASEP, Avaki, Avaki (Arrow Design), Avaki Data Grid, AvantGo, Backup Server, BayCam, Beyond Connected, Bit-Wise, BizTracker, Certified PowerBuilder Developer, Certified SYBASE Professional, Certified SYBASE Professional Logo, ClearConnect, Client-Library, Client Services, CodeBank, Column Design, ComponentPack, Connection Manager, Convoy/DM, Copernicus, CSP, Data Pipeline, Data Workbench, DataArchitect, Database Analyzer, DataExpress, DataServer, DataWindow, DataWindow .NET, DB-Library, dbQueue, Dejima, Dejima Direct, Developers Workbench, DirectConnect Anywhere, DirectConnect, Distribution Director, Dynamic Mobility Model, e-ADK, E-Anywhere, e-Biz Integrator, E-Whatever, EC Gateway, ECMAP, ECRTP, eFulfillment Accelerator, EII Plus, Electronic Case Management, Embedded SQL, EMS, Enterprise Application Studio, Enterprise Client/Server, Enterprise Connect, Enterprise Data Studio, Enterprise Manager, Enterprise Portal (logo), Enterprise SQL Server Manager, Enterprise Work Architecture, Enterprise Work Designer, Enterprise Work Modeler, eProcurement Accelerator, eremote, Everything Works Better When Everything Works Together, EWA, ExtendedAssist, Extended Systems, ExtendedView, Financial Fusion, Financial Fusion (and design), Financial Fusion Server, Formula One, Fusion Powered e-Finance, Fusion Powered Financial Destinations, Fusion Powered STP, Gateway Manager, GeoPoint, GlobalFIX, iAnywhere, iAnywhere Solutions, ImpactNow, Industry Warehouse Studio, InfoMaker, Information Anywhere, Information Everywhere, InformationConnect, InstaHelp, Intelligent Self-Care, InternetBuilder, iremote, irLite, iScript, Jaguar CTS, jConnect for JDBC, KnowledgeBase, Legion, Logical Memory Manager, M2M Anywhere, Mach Desktop, Mail Anywhere Studio, Mainframe Connect, Maintenance Express, Manage Anywhere Studio, MAP, M-Business Anywhere, M-Business Channel, M-Business Network, M-Business Suite, MDI Access Server, MDI Database Gateway, media.splash, Message Anywhere Server, MetaWorks, MethodSet, mFolio, Mirror Activator, ML Query, MobiCATS, MobileQ, MySupport, Net-Gateway, Net-Library, New Era of Networks, Next Generation Learning, Next Generation Learning Studio, O DEVICE, OASIS, OASIS logo, ObjectConnect, ObjectCycle, OmniConnect, OmniQ, OmniSQL Access Module, OmniSQL Toolkit, OneBridge, Open Biz, Open Business Interchange, Open Client, Open ClientConnect, Open Client/Server, Open Client/Server Interfaces, Open Gateway, Open Server, Open ServerConnect, Open Solutions, Optima++, Partnerships that Work, PB-Gen, PC APT Execute, PC DB-Net, PC Net Library, Pharma Anywhere, PhysicalArchitect, Pocket PowerBuilder, PocketBuilder, Power++, Power Through Knowledge, power.stop, PowerAMC, PowerBuilder, PowerBuilder Foundation Class Library, PowerDesigner, PowerDimensions, PowerDynamo, Powering the New Economy, PowerScript, PowerSite, PowerSocket, Powersoft, PowerStage, PowerStudio, PowerTips, Powersoft Portfolio, Powersoft Professional, PowerWare Desktop, PowerWare Enterprise, ProcessAnalyst, Pylon, Pylon Anywhere, Pylon Application Server, Pylon Conduit, Pylon PIM Server, Pylon Pro, QAnywhere, Rapport, Relational Beans, RemoteWare, RepConnector, Report Workbench, Report-Execute, Replication Agent, Replication Driver, Replication Server, Replication Server Manager, Replication Toolkit, Resource Manager, RFID Anywhere, RW-DisplayLib, RW-Library, SAFE, SAFE/PRO, Sales Anywhere, Search Anywhere, SDF, Search Anywhere, Secure SQL Server, Secure SQL Toolset, Security Guardian, ShareSpool, ShareLink, SKILS, smart.partners, smart.parts, smart.script, SOA Anywhere Trademark, SQL Advantage, SQL Anywhere, SQL Anywhere Studio, SQL Code Checker, SQL Debug, SQL Edit, SQL Edit/TPU, SQL Everywhere, SQL Modeler, SQL Remote, SQL Server, SQL Server Manager, SQL SMART, SQL Toolset, SQL Server/CFT, SQL Server/DBM, SQL Server SNMP SubAgent, SQL Station, SQLJ, Stage III Engineering, Startup.Com, STEP, SupportNow, S.W.I.F.T. Message Format Libraries, Sybase Central, Sybase Client/Server Interfaces, Sybase Development Framework, Sybase Financial Server, Sybase Gateways, Sybase IQ, Sybase Learning Connection, Sybase MPP, Sybase SQL Desktop, Sybase SQL Lifecycle, Sybase SQL Workgroup, Sybase Synergy Program, Sybase Virtual Server Architecture, Sybase User Workbench, SybaseWare, Syber Financial, SyberAssist, SybFlex, SybMD, SyBooks, System 10, System 11, System XI (logo), SystemTools, Tabular Data Stream, The Enterprise Client/Server Company, The Extensible Software Platform, The Future Is Wide Open, The Learning Connection, The Model For Client/Server Solutions, The Online Information Center, The Power of One, TotalFix, TradeForce, Transact-SQL, Translation Toolkit, Turning Imagination Into Reality, UltraLite, UltraLite.NET, UNIBOM, Unilib, Uninull, Unisep, Unistring, URK Runtime Kit for UniCode, Viafone, Viewer, VisualWriter, VQL, WarehouseArchitect, Warehouse Control Center, Warehouse Studio, Warehouse WORKS, Watcom, Watcom SQL, Watcom SQL Server, Web Deployment Kit, Web.PB, Web.SQL, WebSights, WebViewer, WorkGroup SQL Server, XA-Library, XA-Server, XcelleNet, XP Server, XTNDAccess and XTNDConnect are trademarks of Sybase, Inc. or its subsidiaries. 05/06

Unicode and the Unicode Logo are registered trademarks of Unicode, Inc.

All other company and product names used herein may be trademarks or registered trademarks of their respective companies.

Use, duplication, or disclosure by the government is subject to the restrictions set forth in subparagraph (c)(1)(ii) of DFARS 52.227-7013 for the DOD and as set forth in FAR 52.227-19(a)-(d) for civilian agencies.

Sybase, Inc., One Sybase Drive, Dublin, CA 94568.

# Contents

<b>About This Book .....</b>	<b>v</b>
<b>CHAPTER 1            Introduction, Installation, and Setup .....</b>	<b>1</b>
Introduction .....	1
Sybase WorkSpace installation .....	5
Tutorial setup .....	5
<b>CHAPTER 2            Mobile Development Tutorials .....</b>	<b>21</b>
Overview .....	21
Creating, previewing, and approving a mobile application .....	22
Deploying a mobile application .....	40
Deploying mobile applications from a portal Web page .....	46



# About This Book

## Audience

This document is intended for developers who want to learn to use the Sybase® WorkSpace tooling to develop mobile applications.

## How to use this book

This guide is divided into these chapters:

- Chapter 1, “Introduction, Installation, and Setup” introduces the Sybase WorkSpace product tutorials, and describes the tasks you must perform before you can run the tutorials.
- Chapter 2, “Mobile Development Tutorials” shows you how to use WorkSpace tools to create mobile applications.

## Related documents

**Sybase WorkSpace tutorials and samples** Sybase WorkSpace includes interactive tutorials and samples that show you how to use WorkSpace tools to create basic parts of a service-oriented application.

You can download the tutorial, sample files, and documentation from Sybase CodeXchange.

For more information about the tutorials and samples and instructions on how to download the files, select **Help|Tutorials** from the WorkSpace main menu bar. To get samples information, select the *Samples Related Topic* at the end of the *Tutorial* topic.

**Sybase WorkSpace online bookshelf** The WorkSpace online bookshelf contains all of the WorkSpace documentation. To access the WorkSpace bookshelf:

- 1 In Windows, select **Start|Programs|Sybase|Sybase WorkSpace|Sybase WorkSpace 1.5** to start Sybase WorkSpace.
- 2 Select **Help|Help Contents** from the WorkSpace main menu bar to open the main **Help** window.

The left pane displays the bookshelf contents, while the right pane displays the details of the selection in the left pane.

The WorkSpace bookshelf contains these document collections:

- *Sybase WorkSpace 1.5 What's New* – summarizes new functionality in this version.

- 
- *Sybase WorkSpace Development* – includes Getting Started, and help for each major component service.
  - *Sybase WorkSpace Server Administration* – documents how to stop, start, and manage the servers included with Sybase WorkSpace.

**Sybase WorkSpace Getting Started CD** The Sybase WorkSpace Getting Started CD includes these documents:

- *Sybase WorkSpace 1.5 Installation Guide*
- *Sybase WorkSpace 1.5 Release Bulletin*
- *Sybase Developer Edition Servers Installation Guide*
- *Sybase Adaptive Server Enterprise 15.0 Installation Guide*
- *Sybase Unwired Accelerator 7.0 Installation Guide*

#### **Other sources of information**

Use the Sybase Getting Started CD, the SyBooks™ CD, and the Sybase Product Manuals Web site to learn more about your product:

- The Getting Started CD contains release bulletins and installation guides in PDF format, and may also contain other documents or updated information not included on the SyBooks CD. It is included with your software. To read or print documents on the Getting Started CD, you need Adobe Acrobat Reader, which you can download at no charge from the Adobe Web site using a link provided on the CD.
- The SyBooks CD contains product manuals and is included with your software. The Eclipse-based SyBooks browser allows you to access the manuals in an easy-to-use, HTML-based format.

Some documentation may be provided in PDF format, which you can access through the PDF directory on the SyBooks CD. To read or print the PDF files, you need Adobe Acrobat Reader.

Refer to the *SyBooks Installation Guide* on the Getting Started CD, or the *README.txt* file on the SyBooks CD for instructions on installing and starting SyBooks.

- The Sybase Product Manuals Web site is an online version of the SyBooks CD that you can access using a standard Web browser. In addition to product manuals, you will find links to EBFs/Maintenance, Technical Documents, Case Management, Solved Cases, newsgroups, and the Sybase Developer Network.

To access the Sybase Product Manuals Web site, go to Product Manuals at <http://www.sybase.com/support/manuals/>.

## **Sybase certifications on the Web**

Technical documentation at the Sybase Web site is updated frequently.

### ❖ **Finding the latest information on product certifications**

- 1 Point your Web browser to Technical Documents at <http://www.sybase.com/support/techdocs/>.
- 2 Select Products from the navigation bar on the left.
- 3 Select a product name from the product list and click Go.
- 4 Select the Certification Report filter, specify a time frame, and click Go.
- 5 Click a Certification Report title to display the report.

### ❖ **Finding the latest information on component certifications**

- 1 Point your Web browser to Availability and Certification Reports at <http://certification.sybase.com/>.
- 2 Either select the product family and product under Search by Product; or select the platform and product under Search by Platform.
- 3 Select Search to display the availability and certification report for the selection.

### ❖ **Creating a personalized view of the Sybase Web site (including support pages)**

Set up a MySybase profile. MySybase is a free service that allows you to create a personalized view of Sybase Web pages.

- 1 Point your Web browser to Technical Documents at <http://www.sybase.com/support/techdocs/>.
- 2 Click MySybase and create a MySybase profile.

## **Sybase EBFs and software maintenance**

### ❖ **Finding the latest information on EBFs and software maintenance**

- 1 Point your Web browser to the Sybase Support Page at <http://www.sybase.com/support>.
- 2 Select EBFs/Maintenance. If prompted, enter your MySybase user name and password.
- 3 Select a product.

- Specify a time frame and click Go. A list of EBF/Maintenance releases is displayed.

Padlock icons indicate that you do not have download authorization for certain EBF/Maintenance releases because you are not registered as a Technical Support Contact. If you have not registered, but have valid information provided by your Sybase representative or through your support contract, click Edit Roles to add the “Technical Support Contact” role to your MySybase profile.

- Click the **Info** icon to display the EBF/Maintenance report, or click the product description to download the software.

## Conventions

The following formatting conventions are used in this document:

Formatting example	To indicate
command names and method names	When used in descriptive text, this font indicates keywords such as: <ul style="list-style-type: none"> <li>Command names used in descriptive text</li> <li>C++ and Java method or class names used in descriptive text</li> <li>Java package names used in descriptive text</li> </ul>
<i>myCounter</i> variable <i>Server.log</i> <i>myfile.txt</i>	Italic font indicates: <ul style="list-style-type: none"> <li>Program variables</li> <li>Parts of input text that must be substituted</li> <li>Directory and file names</li> </ul>
<i>sybase\bin</i>	A backward slash (“\”) indicates cross-platform directory information. A forward slash (“/”) applies to information specific only to UNIX.
<b>File Save</b>	Menu names and menu items display in bold. The vertical bar indicates how to navigate menu selections, such as from the <b>File</b> menu to the <b>Save</b> option.
parse put get Name Address	In syntax and code examples, the vertical bar indicates: <ul style="list-style-type: none"> <li>Options available within code</li> <li>Delimiter within message examples</li> </ul>
create table table created	Monospace font indicates: <ul style="list-style-type: none"> <li>Information that you enter on a command line or as program text.</li> <li>Example output fragments</li> </ul>



Formatting example	To indicate
Type the <b>Name</b> of the attribute. Click <b>Apply</b> .	GUI field or button name that is the recipient of a procedural action.
setup -is:tempdir <full path to alternate temp directory>	Information that must be supplied by the user is displayed between brackets.

### Accessibility features

This document is available in an HTML version that is specialized for accessibility. You can navigate the HTML with an adaptive technology such as a screen reader, or view it with a screen enlarger.

---

**Note** You might need to configure your accessibility tool for optimal use. Some screen readers pronounce text based on its case; for example, they pronounce ALL UPPERCASE TEXT as initials, and MixedCase Text as words. You might find it helpful to configure your tool to announce syntax conventions. Consult the documentation for your tool.

---

For information about how Sybase supports accessibility, see Sybase Accessibility at <http://www.sybase.com/accessibility>. The Sybase Accessibility site includes links to information on Section 508 and W3C standards.

### If you need help

Each Sybase installation that has purchased a support contract has one or more designated people who are authorized to contact Sybase Technical Support. If you cannot resolve a problem using the manuals or online help, please have the designated person contact Sybase Technical Support or the Sybase subsidiary in your area.



# Introduction, Installation, and Setup

This chapter introduces the Sybase WorkSpace Mobile Development tutorials and describes the tasks you must perform before you can begin the lessons.

Topic	Page
Introduction	1
Sybase WorkSpace installation	5
Tutorial setup	5

## Introduction

The interactive tutorials teach you to create components for an integrated development environment, using the Sybase WorkSpace tooling.

This tutorial is based on a sample application, SybStore, which is provided as a complete, working application.

See the online help topic *Mobile Development* in the Sybase WorkSpace Development collection for more information.

---

**Note** To open the online help, launch Sybase WorkSpace, then select **File|Help** from the main menu bar.

---

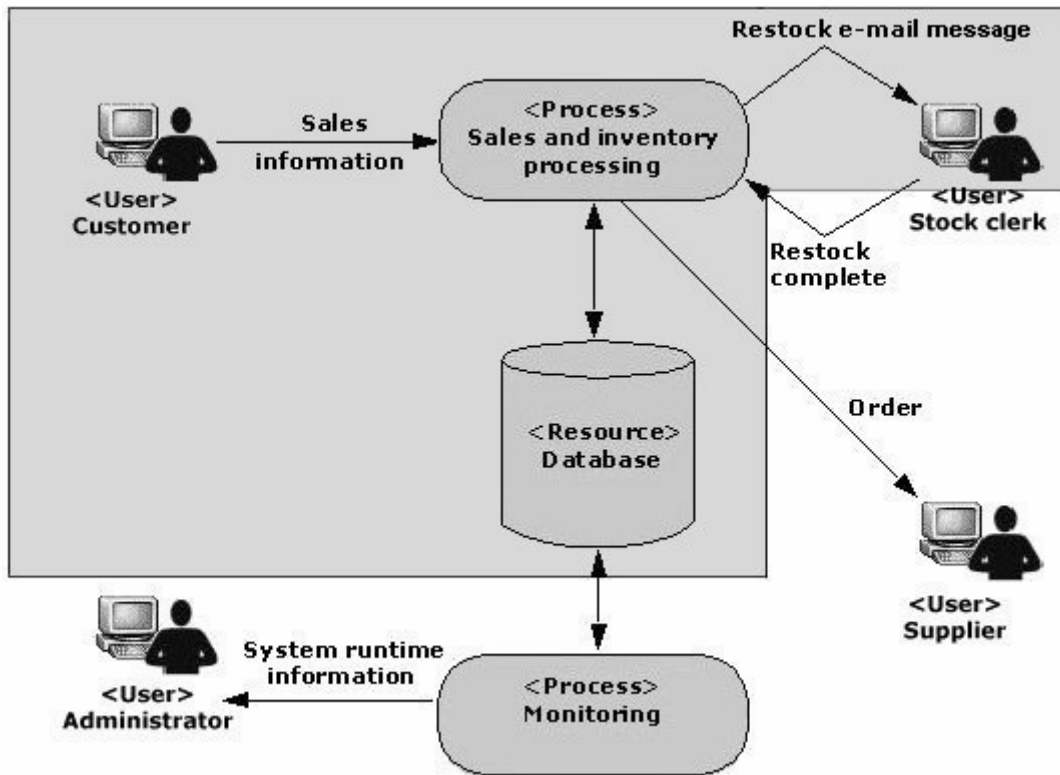
## SybStore tutorials

The tutorials use the SybStore sample application, which is a sales and inventory system that automates the following retail business process.

- 1 A customer buys items from the store, and the cash register records that the items were removed from the shelves.

- 2 The sales and inventory system notifies the stock clerk on a PDA to restock the items.
- 3 The stock clerk receives an e-mail message on the PDA to restock specific items when the sales and inventory system determines that restocking is required.
- 4 The stock clerk updates the sales and inventory system using the PDA when restocking is complete.

The following illustration shows the basic flow of the SybStore application.



---

**Note** The illustration includes actions that are not implemented in the SybStore tutorial application. The actions that are implemented in SybStore tutorials are in the shaded area and contain enough examples to demonstrate how to use Sybase WorkSpace.

---

## SybStore sample

Sybase WorkSpace includes a Mobile Development sample that demonstrates the end result of the completed tutorials.

You can refer to the SybStore sample application at any time—before you start a tutorial, while you are working through a tutorial, or after you complete a tutorial—to explore the application component you build in the tutorial, or to compare your results with the sample.

To download and use the component-based samples and documentation, see the online help topic *Samples* in the Sybase WorkSpace Development collection.

---

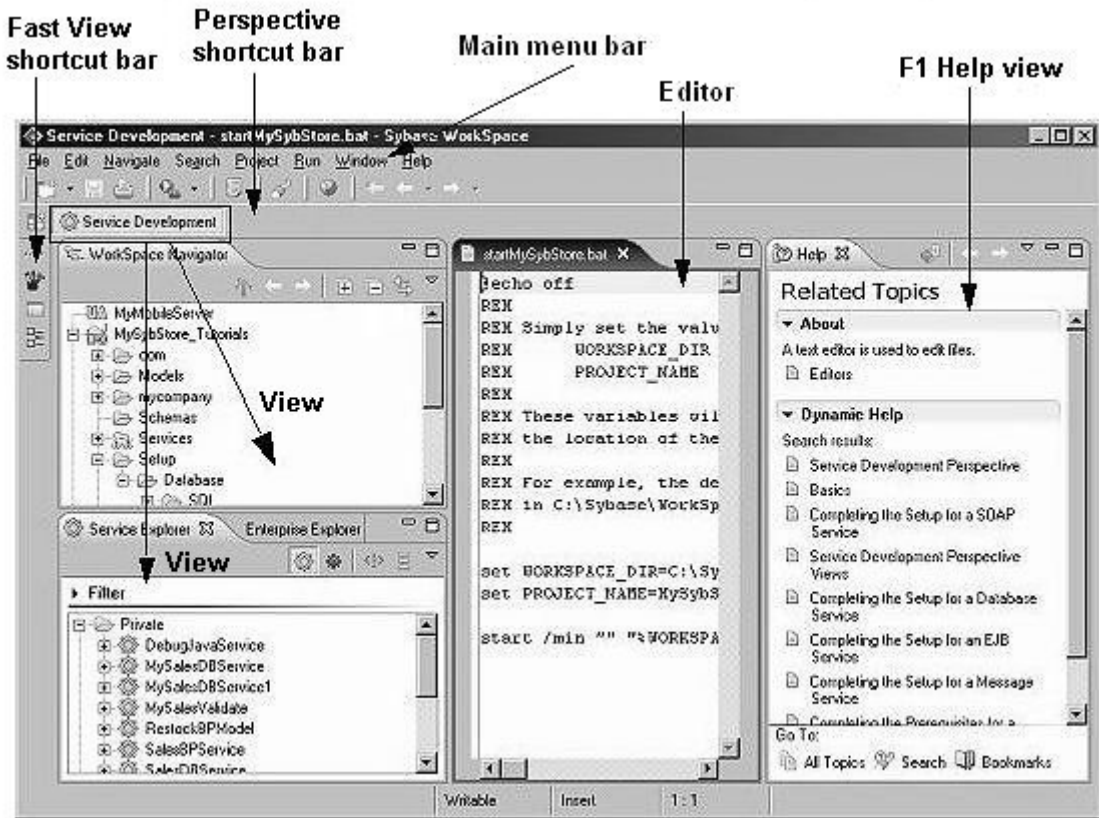
**Note** To open the online help, launch Sybase WorkSpace, then select **File|Help** from the main menu bar.

---

## WorkSpace user interface

The Sybase WorkSpace window is called the **Workbench**. The Workbench opens displaying a **perspective**. A perspective contains views and editors that provide a set of capabilities that enable you to work with resources to perform a task.

The following screen is an example of the Sybase WorkSpace Workbench with the Service Development perspective open.



## Becoming familiar with the Eclipse environment

If you are new to Eclipse, take time to review the Sybase WorkSpace and Eclipse online help on the Sybase WorkSpace bookshelf.

To open the help, select **Help|Help Contents** from the main menu bar of the perspective. In the **Contents** pane:

- To learn Eclipse basics, select **Sybase WorkSpace|Getting Started|Basics**.
- To review all Eclipse functionality, select **Workbench User Guide**.

## Sybase WorkSpace installation

To use the Mobile Development tutorials, install either Sybase WorkSpace version 1.5 or Sybase WorkSpace 1.5 Evaluation software.

You must have Sybase WorkSpace Mobile Development tooling the ASA 9.0.2 Developer Edition server and Unwired Accelerator 7.0 (EAServer) Developer Edition before you begin the tutorial.

For more information, see the *Sybase WorkSpace Installation Guide* and the *Sybase Developer Edition Servers Installation Guide*.

## Installing simulators for Mobile Development

One of the Mobile Development tutorials, “Deploying a mobile application” on page 40, requires that you have mobile device; however, you can use a BlackBerry simulator instead. To launch BlackBerry simulators directly from Sybase WorkSpace, you must install the simulator software before installing any required Sybase Developer Edition Servers. See “Sybase WorkSpace installation” on page 5 for more information.

To install a BlackBerry mobile device, see Chapter 2 of the *Unwired Accelerator 7.0 Installation Guide* located on the Getting Started CD of your installation package.

## Tutorial setup

To prepare your Sybase WorkSpace installation to run the Mobile Development tutorial, complete the setup procedures in this section:

- 1 Downloading the MySybStore\_Tutorials project.
- 2 Importing the tutorial into Sybase WorkSpace.
- 3 Starting and connecting to the MySybStore database.
- 4 Initializing the tutorial database.

## Downloading the MySybStore\_Tutorials project

Before you begin the tutorial, download and import the files that create the MySybStore\_Tutorials project, which contains resources you use in the tutorial.

- 1 In a Web browser, go to the :Sybase Web site at <https://workspace.codeexchange.sybase.com>.
- 2 If you have a MySybase account, enter your **E-mail Address** and **Password**, click **Login**, and go to step 3.  
  
If you do not have a MySybase account, click **Register now!** and follow the steps to create an account.

After you log in, the workspace Project homepage opens.

- 3 In the **Popular Folders** table, click **SybStore** in the **Tutorials v1.5** column.

The **WorkSpace Documents & files: SybStore** page opens.

- 4 Right-click **SybStore Tutorials Project Zip** and select **Save Target As** from the context menu.

The **Save As** dialog box opens.

- 5 Navigate to the location where you want to save the file and click **Save**.  
  
A progress bar indicates that the file is downloading to the selected location.

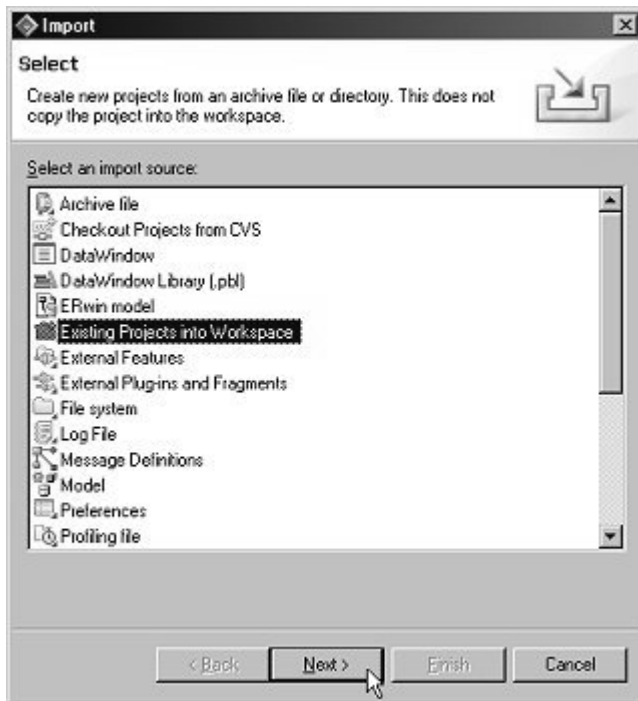
Next, import the tutorial file into Sybase WorkSpace.

## Importing the tutorial into Sybase WorkSpace

- 1 From the Windows Start menu, select **Start|Programs|Sybase|Sybase WorkSpace|Sybase WorkSpace 1.5** to start Sybase WorkSpace.
- 2 If the Sybase WorkSpace **Welcome** page displays, click the **Close** icon in its title bar.  
  
The default Service Development perspective is open.
- 3 Select **File|Import** from the main menu bar of the perspective.

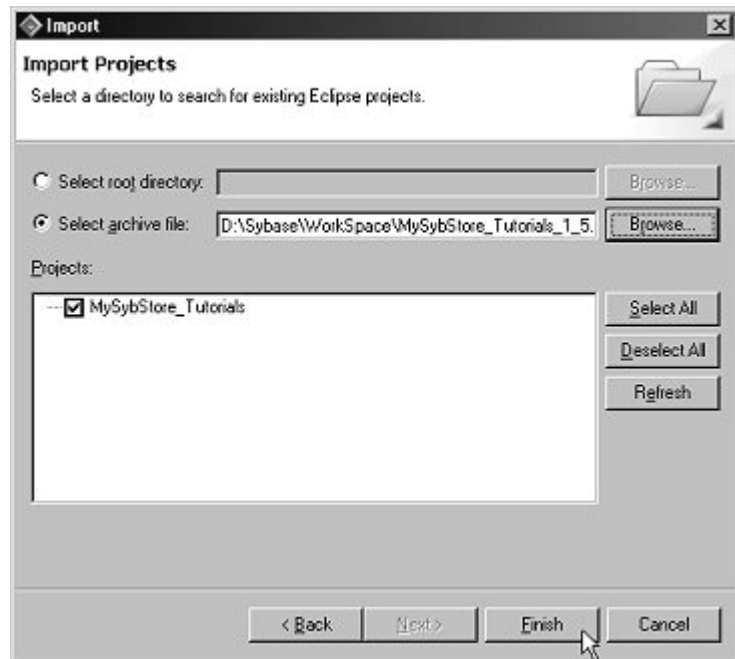


- 4 When the **Import** wizard opens, select **Existing Projects into Workspace** and click **Next**.



- 5 From **Import Projects**, select **Select archive file**, and click **Browse**.
- 6 When the file selection page opens, navigate to the *MySysStore\_Tutorials\_1.5.zip* file and click **Open**.

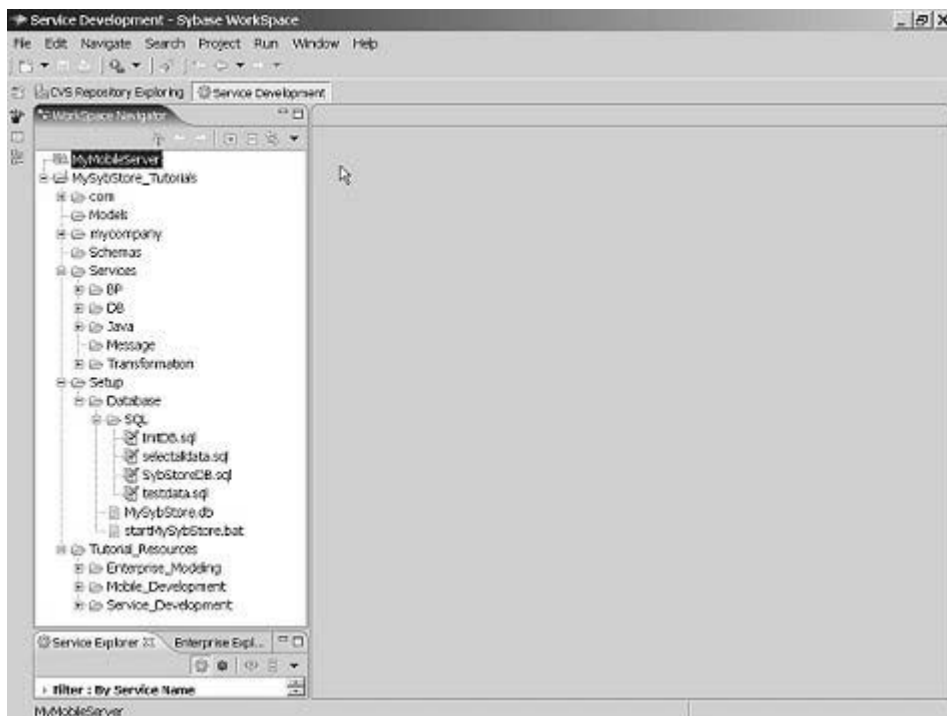
- 7 In the **Projects** list box, verify **MySybStore\_Tutorials** is selected and click **Finish**.



The project imports and displays in the WorkSpace Navigator.

## Reviewing the MySybStore\_Tutorials project

Tutorial resources are stored in the MySybStore\_Tutorials project. To view the project resources, expand the MySybStore\_Tutorials project in the WorkSpace Navigator.



The following table describes the top-level MySybStore\_Tutorials folders:

Folder	Description
<i>com</i>	Automatically generated based on package names contained in services and schemas.
<i>Models</i>	Location to which you should save tutorial models.
<i>mycompany</i>	Location in which the database service proxy files are stored when they are generated.
<i>Services</i>	Folder to which service files are saved. This folder contains subfolders for each service type, such as <b>BP</b> (Business Development), <b>DB</b> (Database), <b>Java</b> , <b>Message</b> , and <b>Transformation</b> , to help categorize the services.
<i>Setup</i>	Contains the tutorial database and SQL scripts. Use the files in this folder to re-create the original database.

Folder	Description
<i>Tutorial_Resources</i>	Contains examples of resources created by the tutorial and miscellaneous resources, such as XSD files, required by the tutorial.  This folder contains subfolders related to other tutorials.

As you work through each lesson, you add new resources to the project.

## Starting and connecting to the *MySybStore* database

The *MySybStore* database is a Sybase Adaptive Server Anywhere database, located in the *MySybStore\_Tutorials* tutorial project you created. Because the tutorial database is required, you must start and connect to the *MySybStore* tutorial database.

### Starting the *MySybStore* database

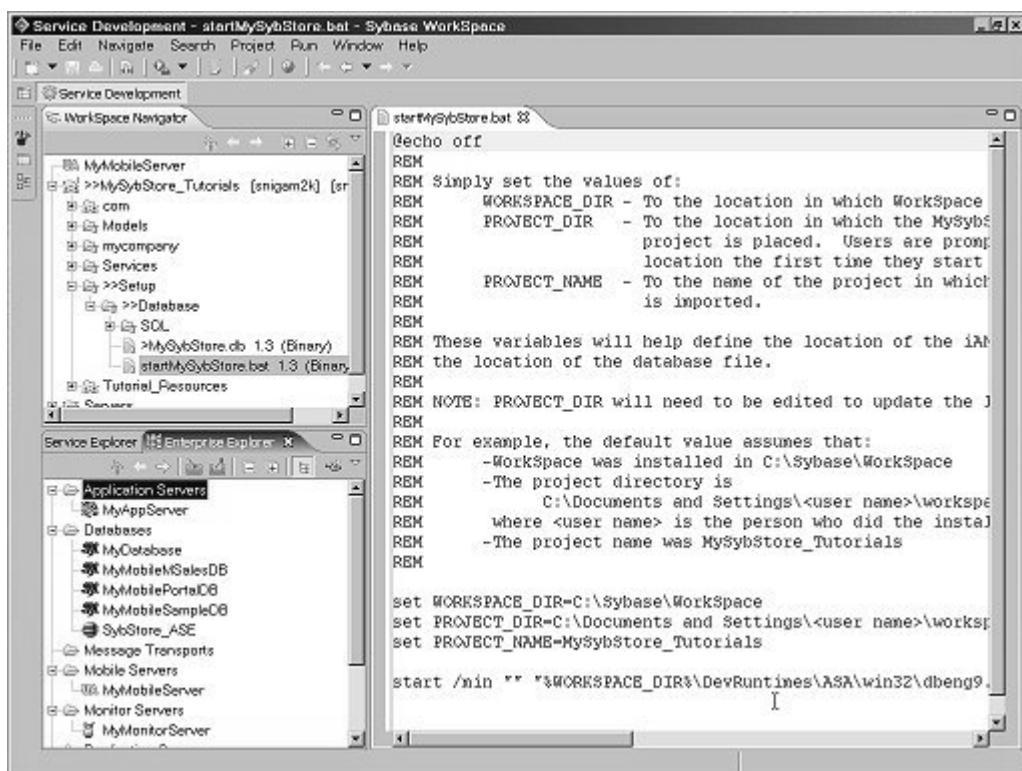
- 1 In the **WorkSpace Navigator**, expand **MySybStore\_Tutorials, Setup, and Database**.



- In the **WorkSpace Navigator**, right-click *startMySybStore.bat*, and select **Open With|Text Editor** from the context menu.



The batch file opens in the text editor.



- 3 Edit the following lines in *startMySybStore.bat* to set the variable values for your installation and project name:

```
set WORKSPACE_DIR=C:\Sybase\WorkSpace
set PROJECT_DIR=C:\Documents and Setting\\workspace
```

- *WORKSPACE\_DIR* must point to the directory in which Sybase WorkSpace is installed; for example, *D:\Sybase\Workspace*.
- *PROJECT\_DIR* must point to the directory in which you want your project files stored. The default is *C:\Documents and Settings\\workspace*. If you created your workspace elsewhere, change the variable value.

For example, if you had the installation create your workspace on *D:\Sybase\\workspace*, change the value to match that path.

- 4 Select **File|Save** from the main menu bar to save the changes.
- 5 Select **File|Close** from the main menu bar to close the editor.
- 6 To start the database, right-click **startMySybStore.bat** in the WorkSpace Navigator and select **Open With|System Editor** from the context menu.

The Adaptive Server Anywhere, Developer Edition pop-up appears for a few seconds. The Adaptive Server Anywhere icon then displays in your system tray, indicating that the database is running.

## Creating a database connection profile

A connection profile must exist for the *MySybStore* tutorial database. The connection profile allows Sybase WorkSpace to connect to the database after the database is started.

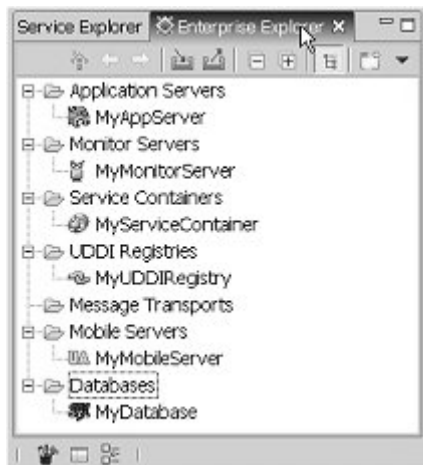
---

**Note** The first time you execute a SQL file, you must specify the connection profile. Subsequently, you do not have to specify the connection profile unless you want to change it. You can create multiple connection profiles for the same database by saving each profile to a different file, which allows you to use different ports or user names and passwords.

---

A connection profile contains the connection information, for example, host name and port, that Sybase WorkSpace uses to connect to a server resource. Create and configure connection profiles in the Enterprise Explorer.

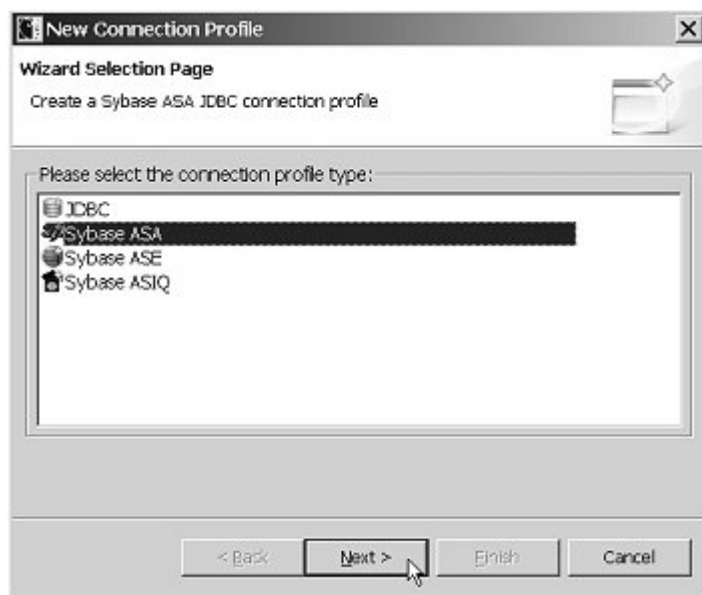
- 1 Select the **Enterprise Explorer** tab, which displays in the perspective if the view is open. If the view is not open, select **Window|Show View|Enterprise Explorer** to open the view.



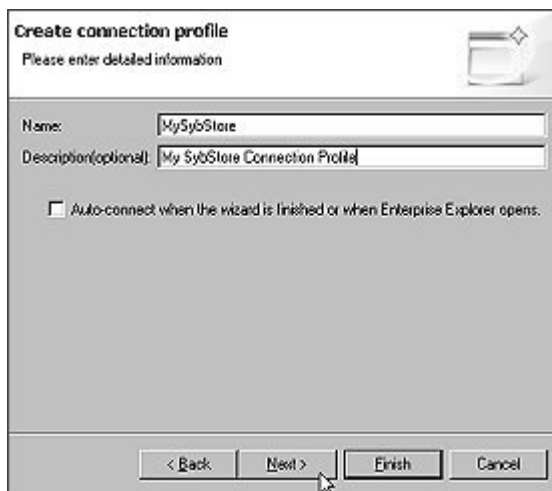
- 2 In the **Enterprise Explorer**, right-click **Databases** and select **New** from the context menu.



- 3 When the **New Connection Profile** wizard opens, select **Sybase ASA** from the connection profile type list and click **Next**.



- 4 Do the following: Type `MySybStore` in the **Name** field, and `MySybStore Connection Profile` in the **Description** field. Click **Next**.



- 5 On the **Driver and Connection Details** page:
  - Verify **Port** is set to 2658.



- Change **Password** to `SQL`.

Specify a Driver and Connection Details

Select a driver from the drop-down and provide login details for the connection.

Connection | Filters | Other Properties

Select a driver from the drop-down:

Sybase ASA Default

Host: localhost

Port: 2608

Database name:

User name: dba

Password: SQL

Test connection

< Back Next > Finish Cancel

- 6 Click **Test Connection** to ensure the values are correct.

The following prompt displays: `Ping Succeeded.`

---

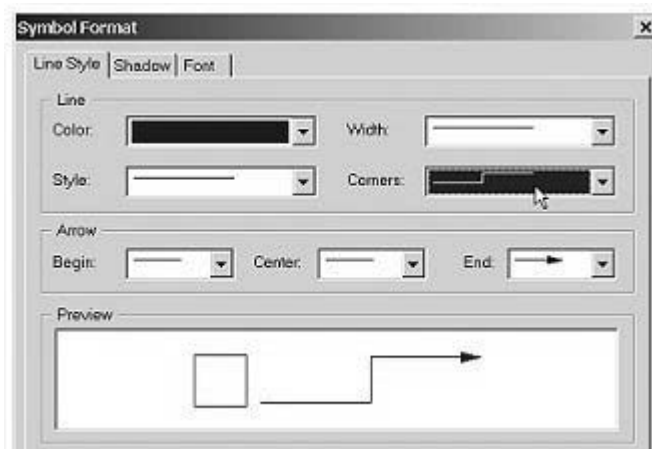
**Note** If the ping fails, verify that the `MySybStore` database is running and that the values entered for **Driver and Connection Details** are correct.

---

- 7 Click **OK**.
- 8 Click **Finish**.

Next, test the connection profile.

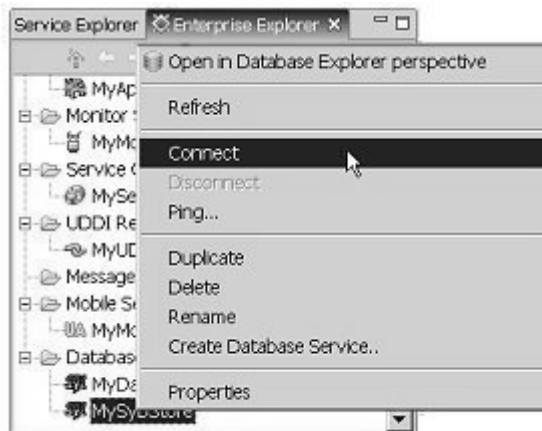
- 9 In the **Enterprise Explorer**, expand **Databases**, right-click the **MySybStore** connection profile, and select **Ping** from the context menu.



- 10 When a prompt indicates `Ping Succeeded`, click **OK**.

The final step in this procedure is to connect to the database.

- 11 In the **Enterprise Explorer**, right-click the **MySybStore** connection profile in **Databases** and select **Connect** from the context menu.



A successful connection is indicated when the database version appears beside the database name in the **Enterprise Explorer** and a database icon displays under the connection profile.

You have created a connection profile and connected to a running database. The **MySybStore** database is used in many of the **Sybase WorkSpace** tutorials.

## Initializing the tutorial database

- 1 Complete the steps in “Tutorial setup” on page 5.

WorkSpace must be running, the SybStore tutorial files must be installed, the SybStore database must be running, and you must be connected to the database using the SybStore connection profile.

- 2 If the **Database Development** perspective is open, continue to the next step.

If the **Database Development** perspective is not open, select **Window|Open Perspective|Database Development** from the main menu bar.

- 3 Execute the *InitDB.sql* script:

- a In the **WorkSpace Navigator**, expand **MySybStore\_Tutorials, Setup, Database, SQL**, select and right-click *InitDB.sql*, and select **Execute SQL File** from the context menu.
- b When the **Select Profile for the Editor** dialog box opens, select the following values.

Field	Select
Database type	<b>Adaptive Server Anywhere_9.x</b>
Connection Profile name	<b>MySybStore</b>

- c Click **OK**.

A progress window indicates that the script is executing. When the script finishes running, the SQL Results view displays in the perspective.

- 4 Execute the *testdata.sql* script:

- a In the **WorkSpace Navigator**, expand **MySybStore\_Tutorials, Setup, Database, SQL**, select and right-click *testdata.sql*, then select **Execute SQL File** from the context menu.
- b When the **Select Profile for the Editor** dialog box opens, select the following values.

Field	Select
Database type	<b>Adaptive Server Anywhere_9.x</b>
Connection Profile name	<b>MySybStore</b>

- c Click **OK**.

A progress window indicates that the script is executing. When the script finishes running, the SQL Results view displays in the perspective.

## Starting and connecting to the Unwired Accelerator server

There are two versions of Unwired Accelerator that may be available to you:

- A version hosted on EAServer
- A version hosted on Tomcat

You can use either version, depending on your preference and which Unwired Accelerator components you installed.

You must start the Unwired Accelerator server outside of Sybase WorkSpace, using the Windows **Start** menu.

- 1 Using the Windows task bar, select **Start|Programs|Sybase|Sybase WorkSpace|UA 7.0|Start UA (Tomcat)**.

---

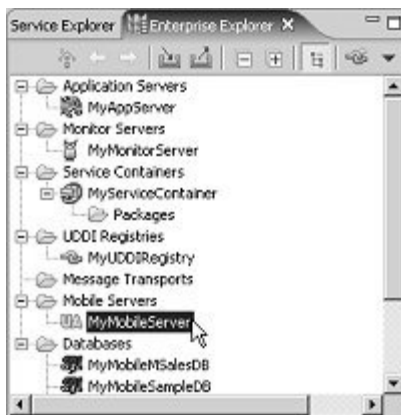
**Note** For the tutorials, use Unwired Accelerator running on Tomcat. In your development environment, you can run Unwired Accelerator on EAServer.

---

- 2 Minimize (but do not close) any open command windows.
- 3 Start Sybase WorkSpace. In Windows, select **Start|Programs|Sybase|Sybase WorkSpace|Sybase WorkSpace 1.5**.
- 4 In the WorkSpace main window, select the **Enterprise Explorer** tab if that view is open. If that view is not open, select **Window|Show View|Enterprise Explorer** to open the view.

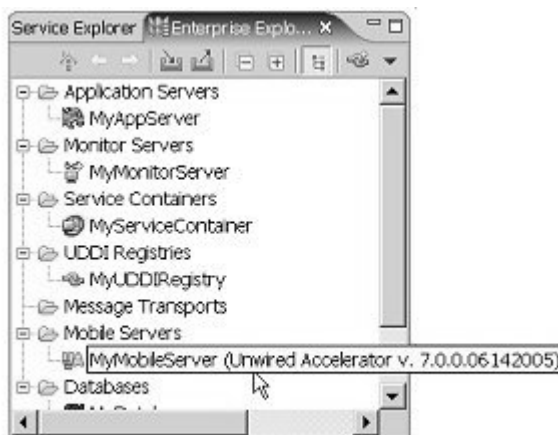
Next, establish a connection to Unwired Accelerator in WorkSpace. The Mobile Development tutorials use the default Unwired Accelerator connection profile, MyMobileServer.

- Expand the **Mobile Servers** folder to locate **MyMobileServer**.



- Right-click **MyMobileServer** and select **Ping** from the context menu.
- When the `Ping Succeeded` message displays, click **OK**.
- In the **Enterprise Explorer** view, right-click **MyMobileServer** and select **Connect** from the context menu.

The Unwired Accelerator version number appears beside **MyMobileServer**, indicating the connection was successful.





These tutorials teach you how to use Sybase WorkSpace Mobile Development tooling to create and deploy mobile applications.

Topic	Page
Overview	21
Creating, previewing, and approving a mobile application	22
Deploying a mobile application	40
Deploying mobile applications from a portal Web page	46

## Overview

Sybase WorkSpace Mobile Development tooling, along with the Sybase Unwired Accelerator, offers a rich selection of features. You can retrieve content from many sources—including databases, Web services, and existing Web pages—then display that content in a browser and on a variety of mobile devices.

The Mobile Development tutorials teach you how to:

- Create and test a mobile application that contains content from a database
- Deploy mobile applications to BlackBerry devices
- Deploy a mobile application to a portal page

---

**Note** For more information, see the WorkSpace online help topic *Sybase WorkSpace Development/Mobile Development and Sybase WorkSpace Server Administration/Unwired Accelerator 7.0*.

---

The Mobile Development tutorials are divided into three groups, each containing one or more tutorials:

- Creating, previewing, and approving a mobile application.

- Deploying a mobile application.
- Deploying mobile applications from a portal Web page.

Each tutorial consists of several lessons.

## Prerequisites

Before you begin the Mobile Development tutorials, complete all of the procedures in Chapter 1, “Introduction, Installation, and Setup.”

## Creating, previewing, and approving a mobile application

This tutorial introduces you to Mobile Development tooling, and shows you how to create and preview a mobile application using WorkSpace. After you complete this tutorial, you will know how to create a mobile application and prepare it for deployment. You will have a complete mobile application, which is a working subset of the SybStore mobile application.

The mobile application you create in this tutorial selects data from a table in the MySybStore database, and presents it to mobile devices.

---

**Note** You can find the complete SybStore mobile application in the Sybase WorkSpace samples.

---

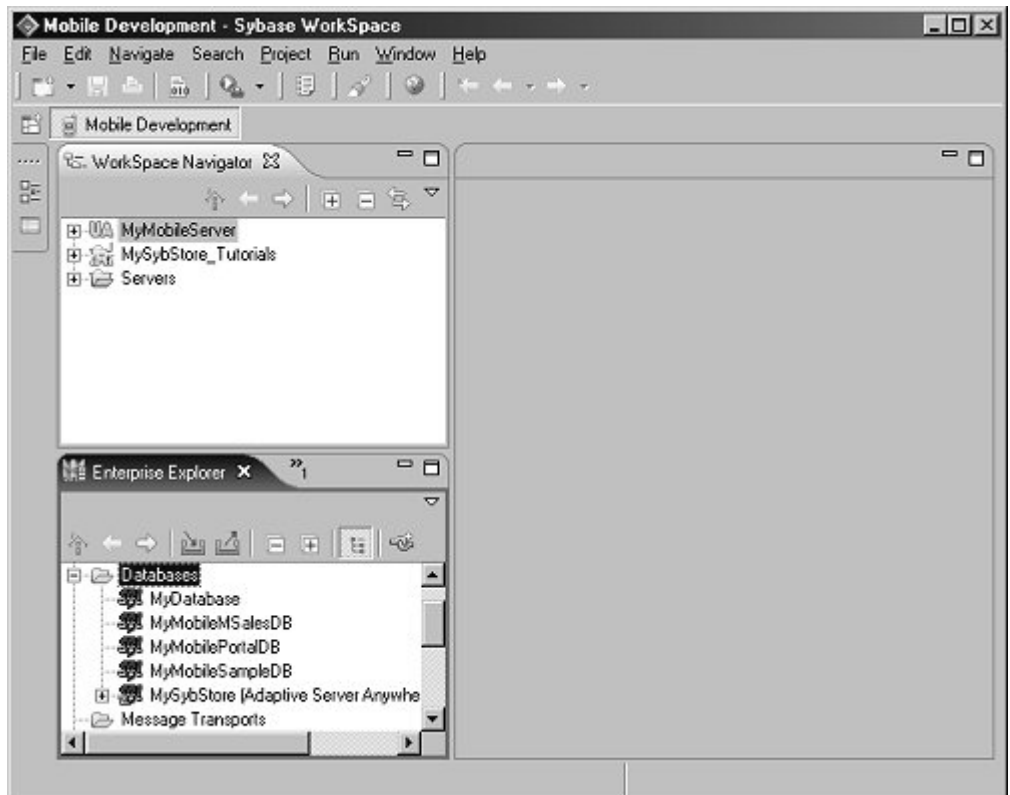
## Lesson 1: Using Mobile Development tooling

In this lesson, you will become familiar with some of the Mobile Development tooling in Sybase WorkSpace.

- 1 Start Sybase WorkSpace. In Windows, select **Start|Programs|Sybase|Sybase WorkSpace|Sybase WorkSpace 1.5**.
- 2 Select **Window|Open Perspective|Mobile Development** on the main menu bar to open that perspective.



The **Mobile Development** perspective includes the **WorkSpace Navigator**, the **Service Explorer** view, and the **Enterprise Explorer** view in the WorkSpace main window.



- 3 Start Unwired Accelerator. In Windows, select **Start|Programs|Sybase|Sybase WorkSpace|UA 7.0|Start UA (Tomcat)**. A command windows open and Unwired Accelerator starts on Apache Tomcat.

- 4 In the **WorkSpace Navigator**, right-click the **MyMobileServer** project, and select **Connect**.

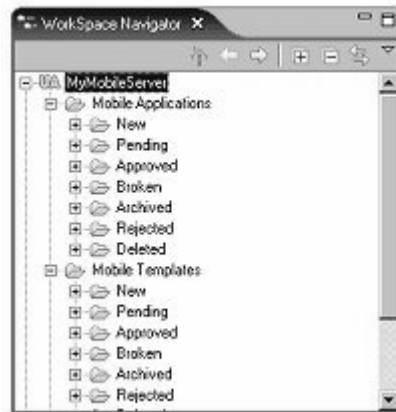
---

**Note** You can also make a connection by right-clicking **MobileServers/MyMobileServer** in the **Enterprise Explorer** view and selecting **Connect** from the context menu.

---

The MyMobileServer project is a linked project, which means that the project and its folder link directly to the actual contents of the Unwired Accelerator identified in the MyMobileServer connection profile.

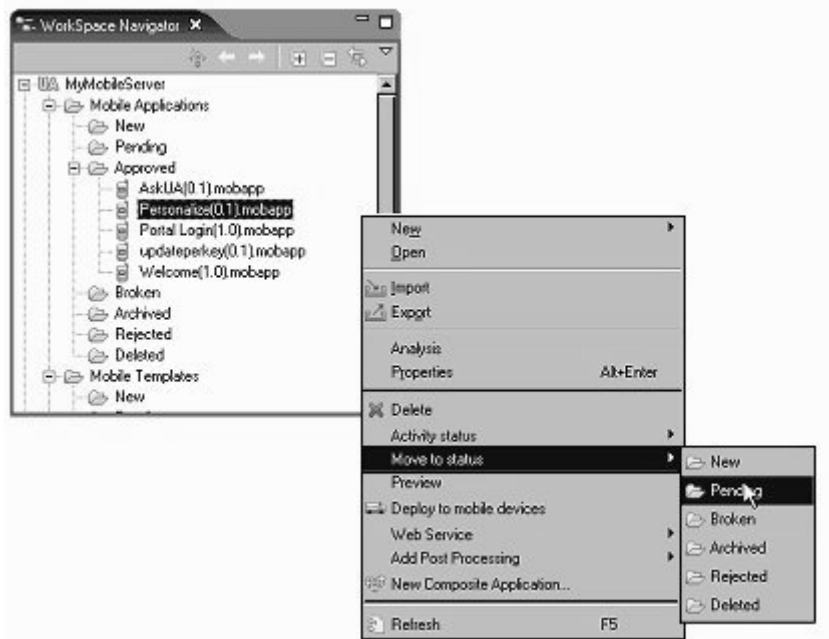
- 5 In the **WorkSpace Navigator**, expand the **MyMobileServer** project, then expand the **Mobile Applications** and the **Mobile Templates** folders.



The status you select in the New Mobile Application creation wizard determines the folder in which the mobile application is saved:

- Select New (default) to save the application to the New folder.
- Select Approved to save the application to the Approved folder and deploy the application.

- 6 In the **WorkSpace Navigator**, expand the **Mobile Applications/Approved** folder to view the prebuilt approved applications that are installed with Sybase WorkSpace.



Move mobile applications and templates from folder to folder by dragging and dropping them to a different folder or by right-clicking an application or template and selecting Move to Status from the context menu.

You are now be familiar with the Mobile Development perspective and some of its views. You should have a general understanding of linked projects and how a linked project relates to Unwired Accelerator.

## Lesson 2: Creating a mobile application

In this lesson, you will create a mobile application that includes data from the SybStore database warehouse\_inventory table.

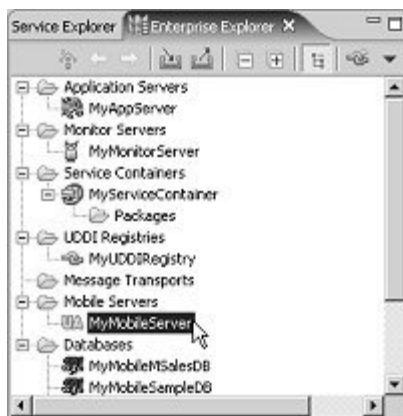
**Note** Before you begin this lesson:

- Verify that the tutorial database is running and that a connection is established to the database in WorkSpace from the SybStore connection profile.
- Verify that Unwired Accelerator is running.

See “Starting and connecting to the MySybStore database” on page 10 and “Starting and connecting to the Unwired Accelerator server” on page 18 for details.

---

- 1 In the WorkSpace main window, select the **Enterprise Explorer** tab if that view is open. If that view is not open, select **Window|Show View|Enterprise Explorer** to open the view.
- 2 Expand the **Mobile Servers** folder to locate **MyMobileServer**.



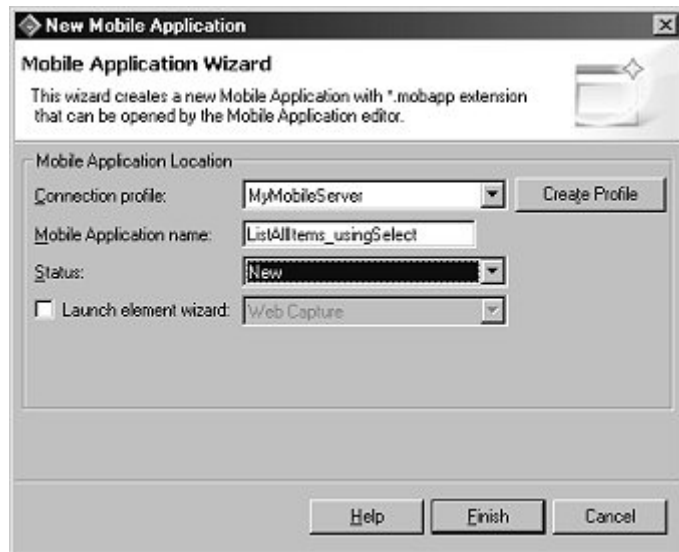
- 3 Right-click **MyMobileServer** and select **Ping** from the context menu to test the connection.
- 4 When the `Ping Succeeded` message displays, click **OK**.
- 5 In the **Enterprise Explorer** view, right-click **MyMobileServer** and select **Connect** from the context menu.

The Unwired Accelerator version appears beside **MyMobileServer**, indicating the connection is established.

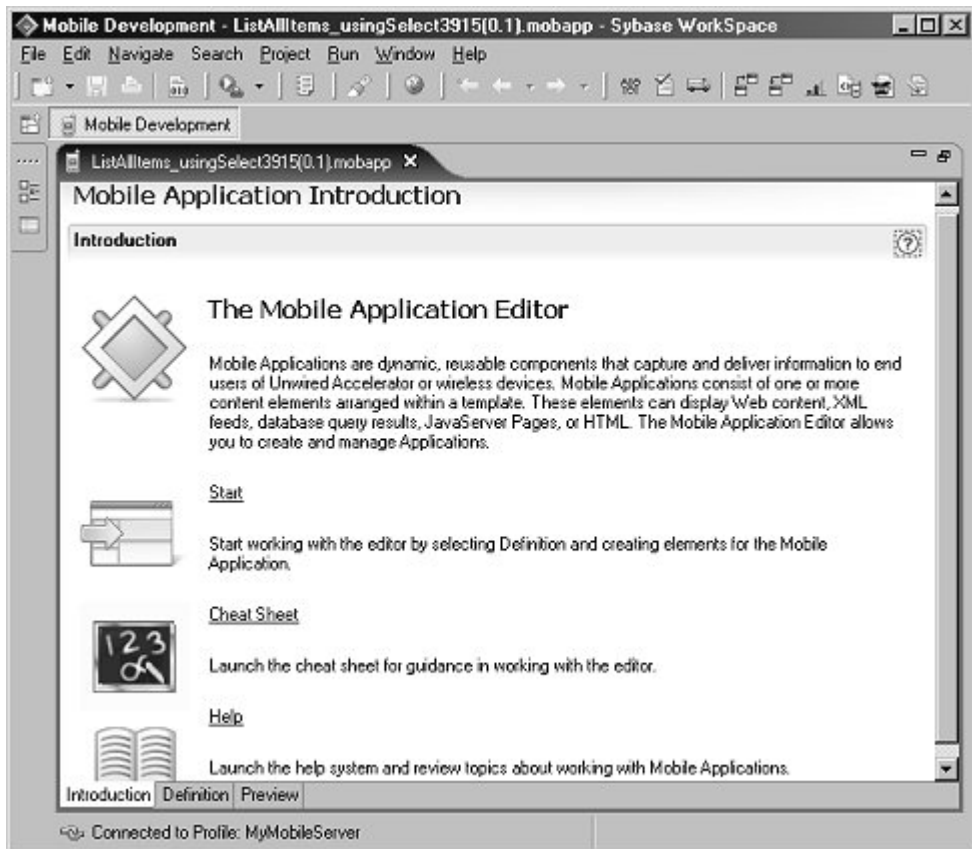


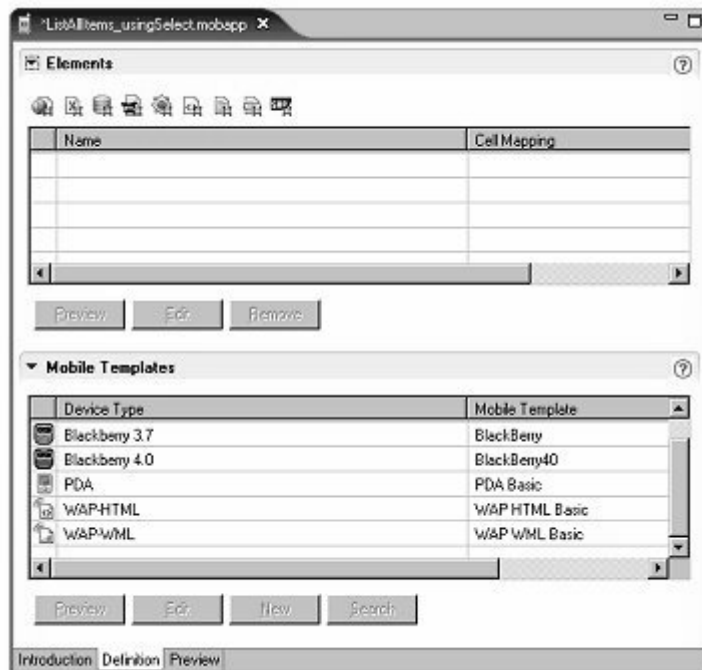
- 6 Select **File|New|Mobile Application** from the WorkSpace main menu bar.
- 7 When the **Mobile Application Wizard** opens, complete these options:
  - **Connection Profile** – select **MyMobileServer**.
  - **Mobile Application Name** – enter `ListAllItems_usingSelect`.
  - **Status** – select **New**.

Click **Finish**.



The Mobile Application editor appears. By default, the Introduction tab displays additional help which you can use to get started.



8 Select the **Definition** tab.

The Elements section of the Definition page is where you add specific content to the mobile application. You can add one or more elements to each mobile application. In this lesson, you will add a database element.

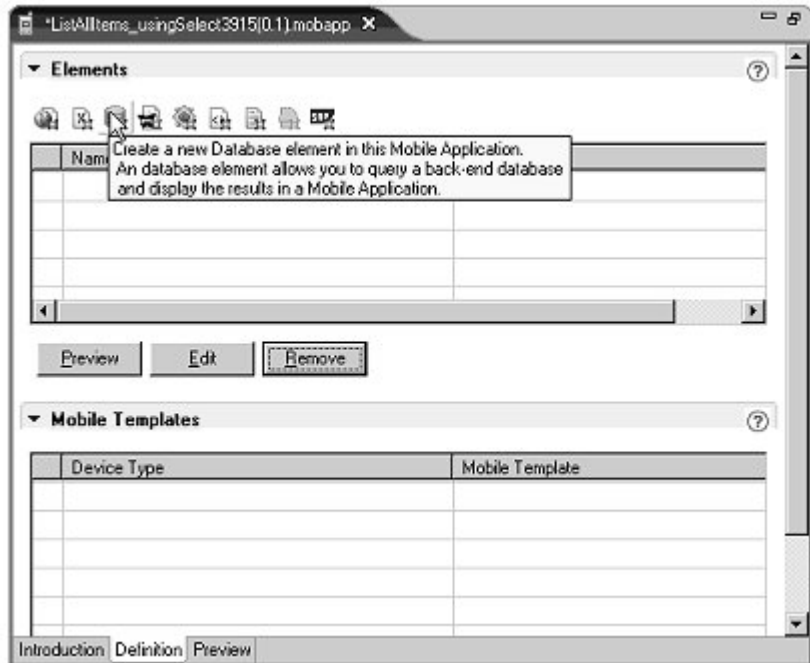
The icons at the top of the Elements pane represent supported content sources:

- Web element
- XML element
- Database element
- JSP element
- Web Service element
- HTML element
- File element
- Document element
- SAP element

The Mobile Templates portion of the Definition page is where you define which template to use for each device type.

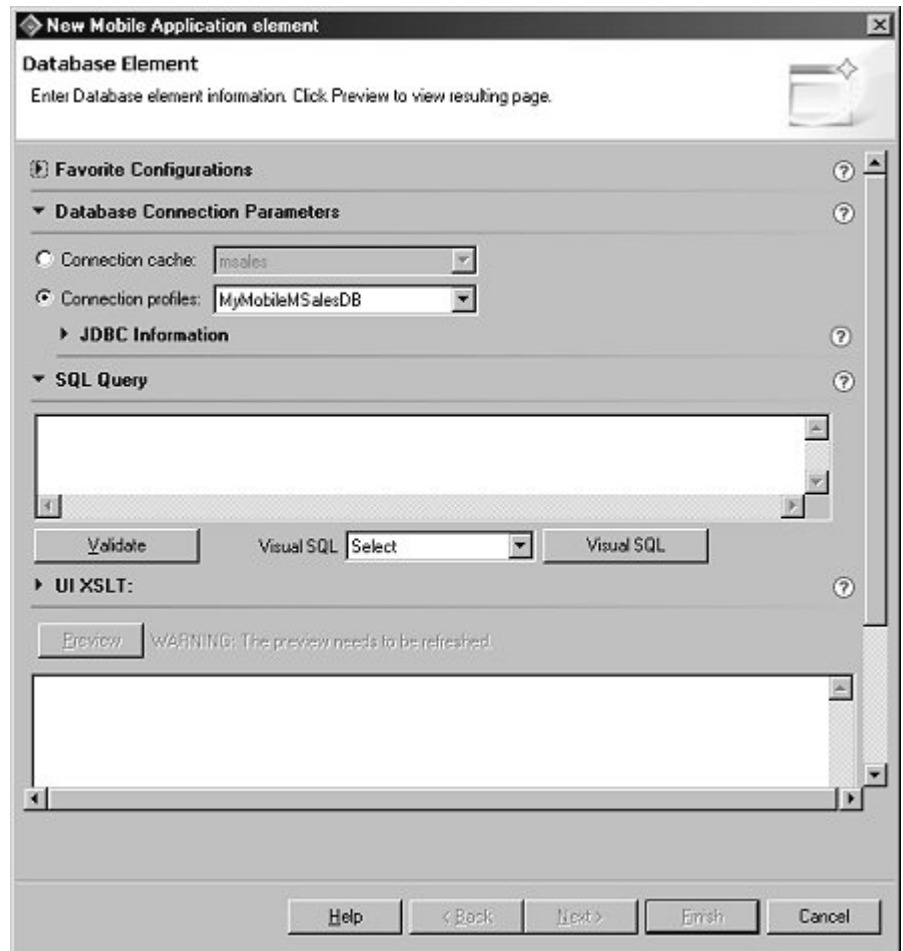
You can display the same content on different device types. You can choose which template to use for each device to provide the best content presentation. When a given device type connects to Unwired Accelerator, the content is rendered using the assigned template.

- 9 Click the database element icon in the **Elements** section.



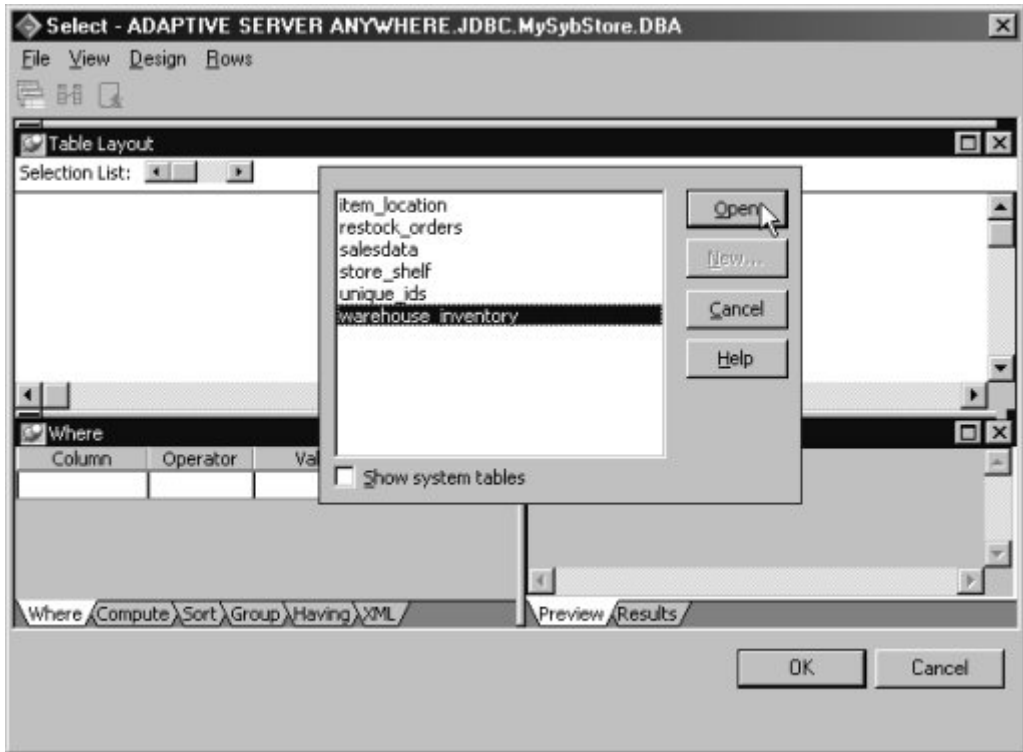


The New Mobile Application Element wizard displays.

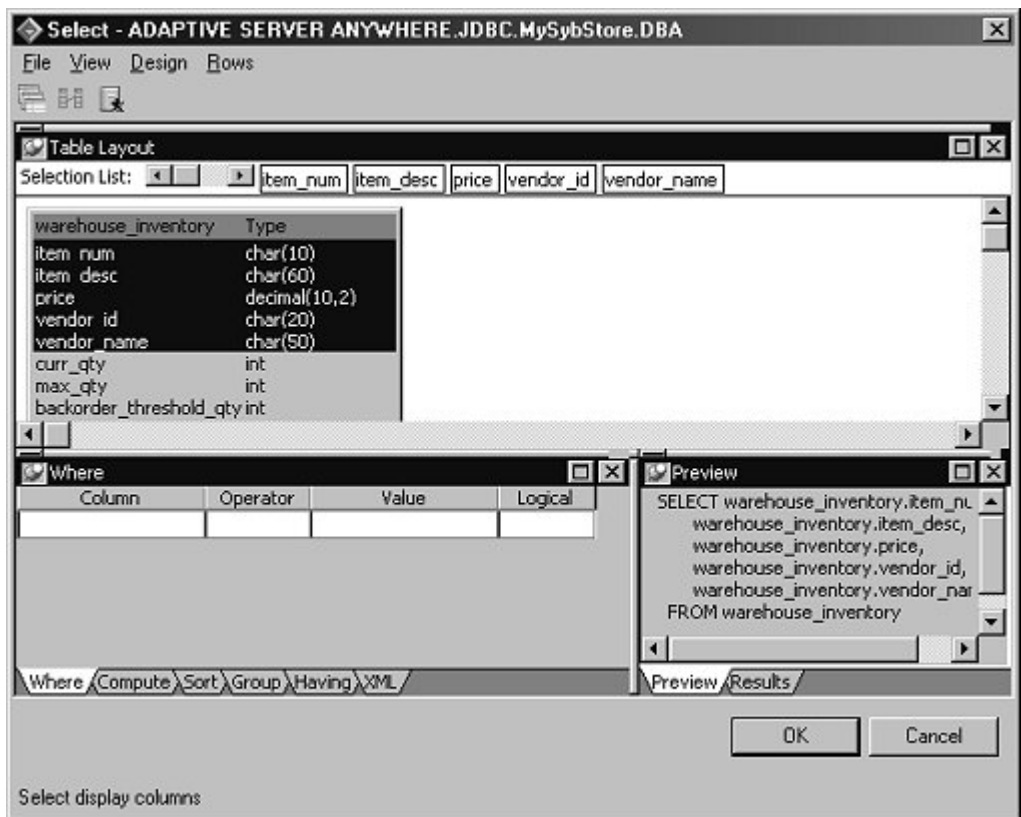


- 10 Select **Connection Profiles** in the **Database Connections** section, then select **MySybStore** from the drop-down list.
- 11 In the **SQL Query** section, choose **Select** from the **Visual SQL** drop-down list, then click the **Visual SQL** button. The database **Select** window opens, which allows you to visually create SQL for the selected statement.

12 Select the warehouse\_inventory table and click **Open**.



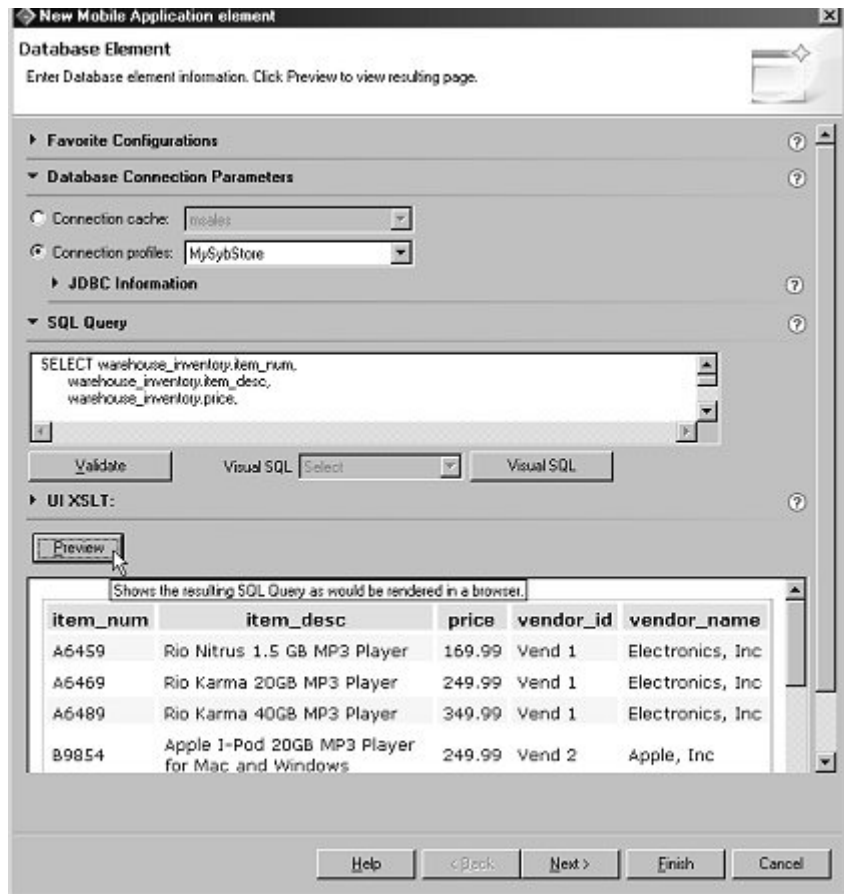
- 13 Select the first five columns in the table by clicking on each column in the **Table Layout** pane.



Each column is added to the Selection List toolbar and to the SELECT statement in the Preview window. You are now finished creating the SELECT statement.

- 14 Click **OK**. The SELECT statement appears in the SQL Query pane.
- 15 Click **Validate** to perform a syntax check on the SQL.

- 16 When you see a message that the SQL validated successfully, click **OK**, then click **Preview** to display the SQL query in the preview pane.



**Note** If the data that displays in the preview does not resemble the preceding image, make sure you initialized the tutorial database. See “Initializing the tutorial database” on page 17 for instructions.

17 Click **Next**. The Rules page of the wizard appears.

Rules

Enter rules information.

Favorite Configurations

Name:  Save Remove

Record Layout

Row  Column

Records contain labels

Labels are displayed in record

Transpose rows and columns

Defined Rules

Split Rules

Filter Rules

Add Edit Remove

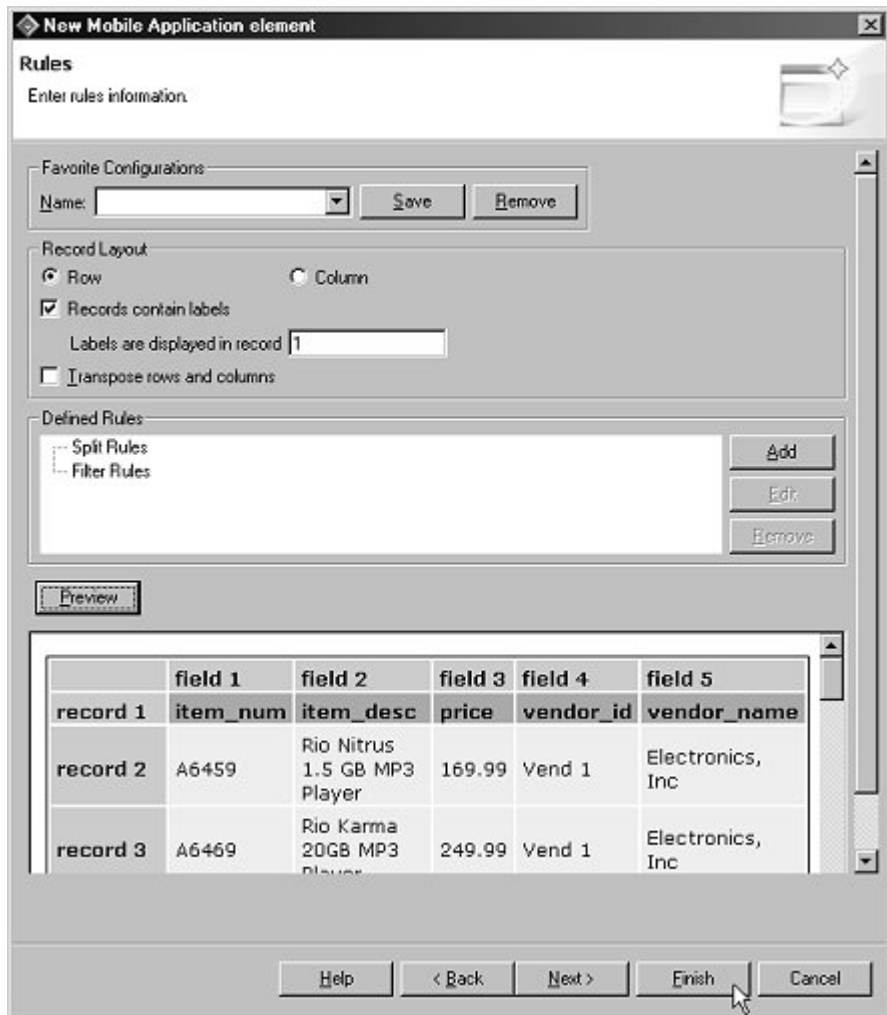
Preview

	field 1	field 2	field 3	field 4	field 5
record 1	item_num	item_desc	price	vendor_id	vendor_name
record 2	A6459	Rio Nitrus 1.5 GB MP3 Player	169.99	Vend 1	Electronics, Inc
record 3	A6469	Rio Karma 20GB MP3 Player	249.99	Vend 1	Electronics, Inc
record 4	A6489	Rio Karma 40GB MP3 Player	349.99	Vend 1	Electronics, Inc

Help < Back Next > Finish Cancel

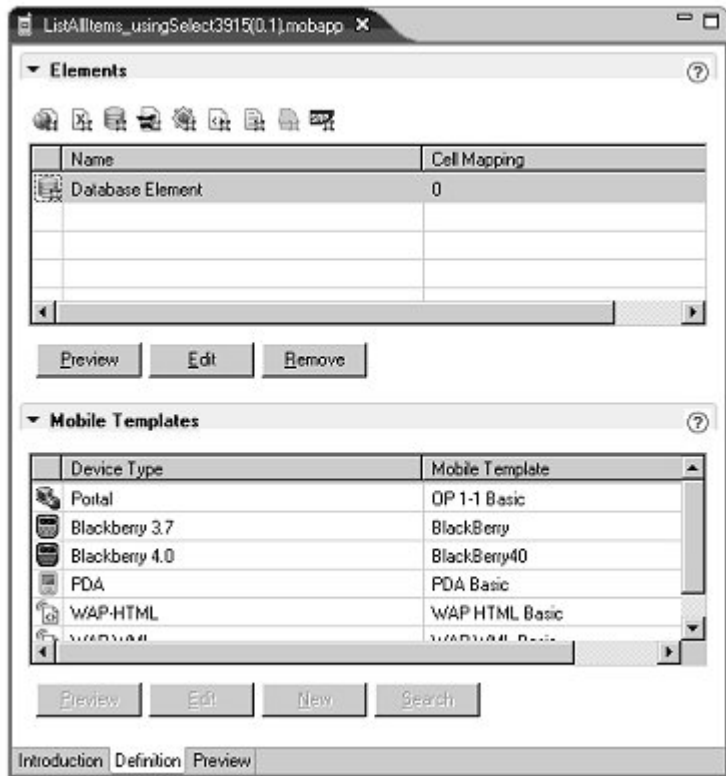
18 In the **Record Layout** section, select **Row** and the **Records Contain Labels** option, then click **Preview**.

The preview highlights the column headers.



19 Click **Finish** to return to **Definition** tab of the Mobile Application editor.

The element that you created displays in the Elements section.



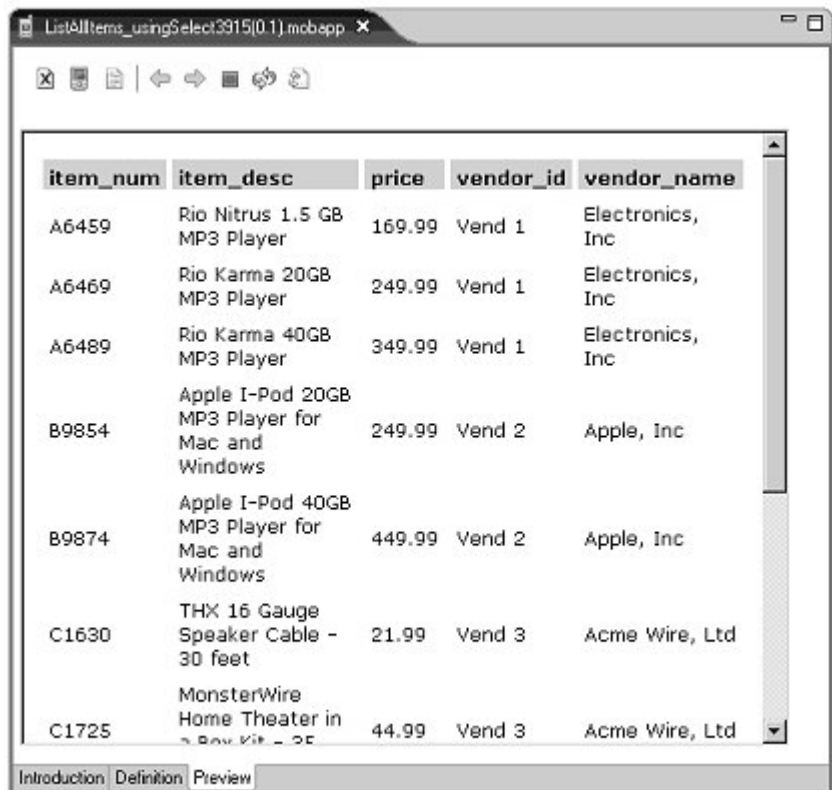
- 20 Select **File|Save** from the Workspace main menu bar to save the mobile application.

---

**Note** Always save mobile applications before selecting **Preview**.

---

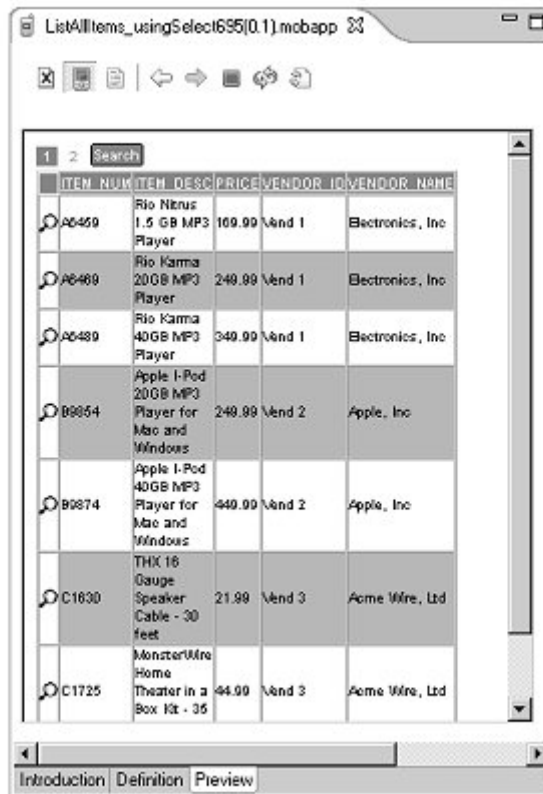
21 Select the **Preview** tab in the Mobile Application editor.



By default, the preview shows how the content would look displayed in a portal with a desktop browser.



- 22 Click the **PDA** icon to preview the display.



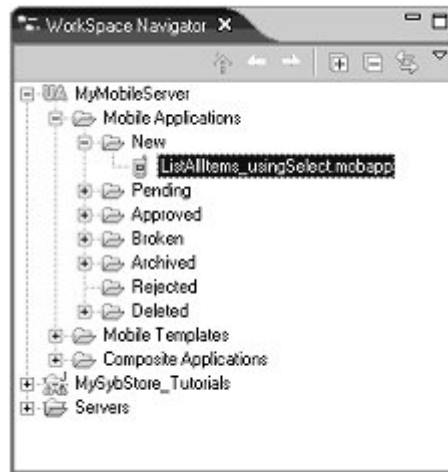
- 23 Select **File|Close All** from the WorkSpace main menu to close the preview window and editor.

### Lesson 3: Moving a mobile application to the approved status

To deploy a new mobile application, its status must be Approved. In this lesson, you will prepare a mobile application for deployment by moving it from the New folder to the Approved folder.

- 1 In the **WorkSpace Navigator**, expand the **MyMobileServer/Mobile Applications/New** folder.

You see the mobile application that you created in the previous lesson.



- 2 Right-click the mobile application and select **Move to Status|Approved** from the context menu.

The application appears in the **Approved** folder.

## Deploying a mobile application

This tutorial teaches you how to deploy a mobile application to a mobile device. To deploy a mobile application to a BlackBerry device, you mark the mobile application for Offline BlackBerry access in the application properties. Once this is done, the next time the BlackBerry device is synchronized from the Unwired Accelerator client on the device, the mobile application will be available to the device.

To install a BlackBerry mobile device, see Chapter 2 of the *Unwired Accelerator 7.0 Installation Guide* located on the Getting Started CD of your installation package.

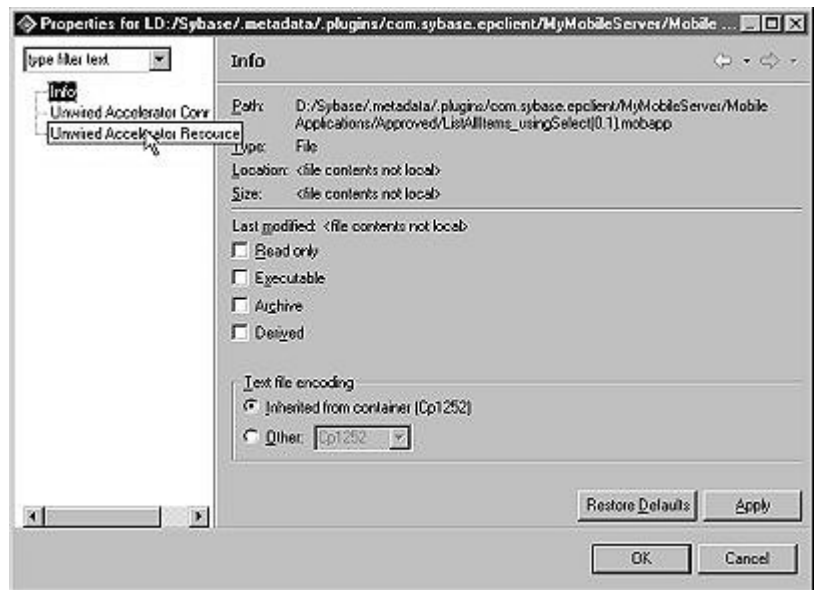
To use a BlackBerry simulator for this tutorial, refer to “Installing simulators for Mobile Development” on page 5 for instructions.

## Lesson 1: Deploying to a Blackberry device

Before you begin, complete “Creating, previewing, and approving a mobile application” on page 22.

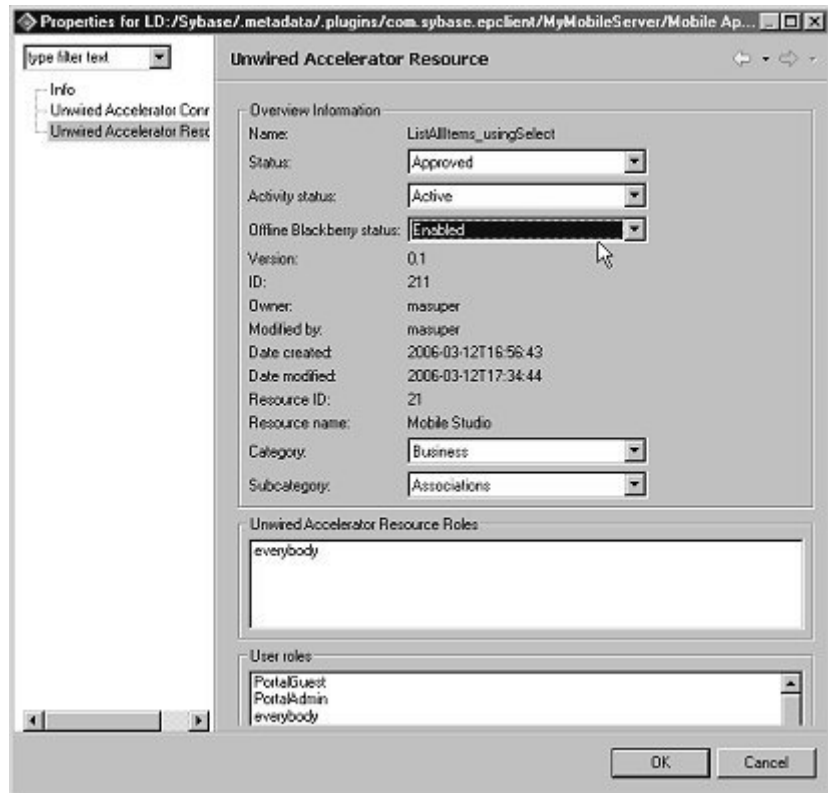
- 1 If the **Mobile Development** perspective is not open, select **Window|Open Perspective|Mobile Development** on the WorkSpace main menu bar.
- 2 In the **WorkSpace Navigator**, expand the folder **MyMobileServer/MobileApplications/Approved**, right-click the **ListAllItems\_usingSelect** mobile application, and select **Properties** from the context menu.

The mobile application **Properties** dialog box displays.



- 3 Select **Unwired Accelerator Resource** in the tree view.

4 Verify that the **Offline BlackBerry Status** field is set to **Enabled**.



5 Click **OK**. You have finished making a mobile application available for offline Blackberry access.

## Lesson 2: Deploying to M-Business Anywhere

In this lesson, you will learn how to set up a mobile application to prepare it for deployment to M-Business Anywhere. You can deploy a mobile application to M-Business Anywhere using any of three methods:

- Public channel
- Group channel

- Mobile application

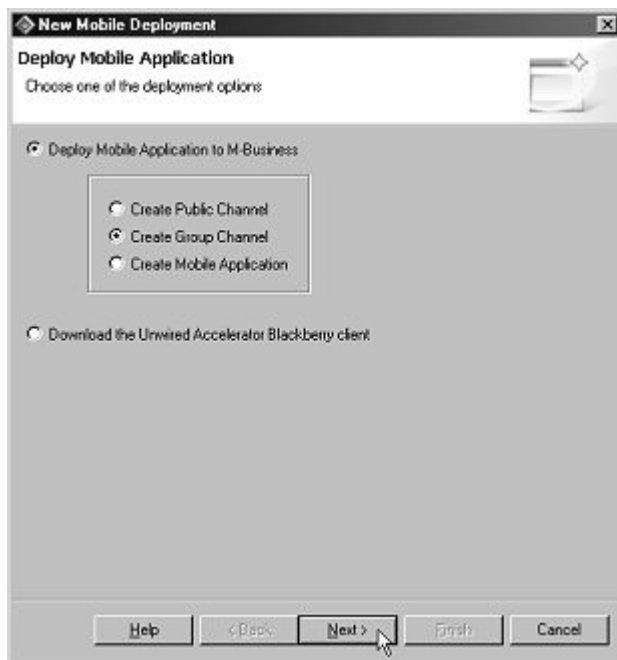
---

**Note** Before you begin, you must have Unwired Accelerator running and have a connection established in WorkSpace. See “Starting and connecting to the Unwired Accelerator server” on page 18.

---

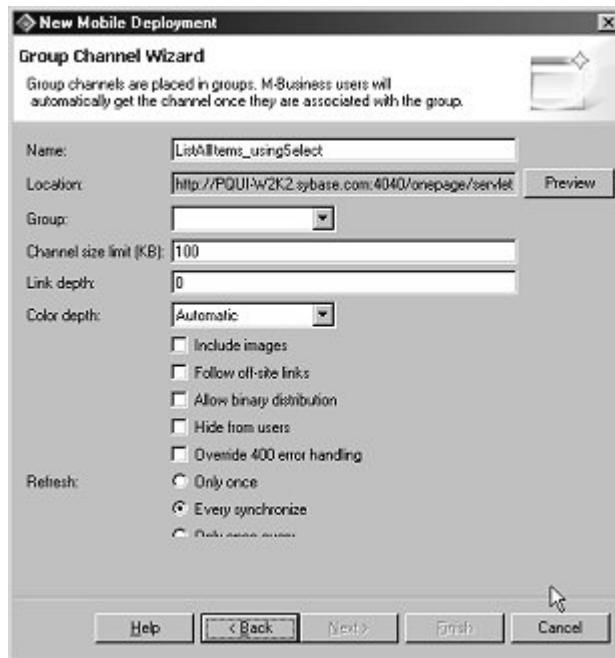
- 1 Create a new M-Business group:
  - a Select **Window|Show View|M-Business** from the WorkSpace main menu.
  - b In the M-Business view that displays, right-click **MyMobileServer/Group Channels** and select **New|Group** from the context menu.
  - c When the **Create New Group** dialog box opens, complete these options:
    - Connection Profile – select **MyMobileServer**.
    - Name – enter `List Items`.
    - Description – enter `List all items`.
    - Type – select **Managed**.
- 2 Click **OK**.
- 3 In the **WorkSpace Navigator**, right-click the **ListAllItems\_usingSelect** mobile application and select **Deploy to Mobile Devices** from the context menu.

The **New Mobile Deployment** wizard appears.



- 4 Select **Deploy Mobile Application to M-Business** and **Create Group Channel**, then click **Next**.

The **Group Channel Wizard** opens.



5 Complete these options:

- Name – enter `ListAllItems_usingSelect`.
- Group

Click **Next**.

6 Click **Finish** to deploy the mobile application to M-Business Anywhere. You have finished deploying a mobile application to M-Business Anywhere.

## Deploying mobile applications from a portal Web page

This tutorial teaches you how to use WorkSpace to build mobile applications and deploy those applications from portal Web pages. Portal functionality is generally used for applications that a user accesses via a standard Web browser, as opposed to mobile applications that are individually deployed to a mobile device. The Web browser can be on a desktop computer or on a handheld mobile device.

At the end of the tutorial you will know how to:

- Turn on portal functionality within WorkSpace mobile tooling
- Add a mobile application to a page
- Add a Web page to a page group
- Deploy a page group
- Browse to a mobile application on a mobile device

This tutorial teaches you how to use the Mobile Development tooling with Unwired Accelerator. It assumes a working knowledge of Sybase Unwired Accelerator.

---

**Note** Mobile applications are deployed to portals within page groups, which means that the mobile application must be placed on a page that is contained in a page group. When the page group is deployed, the mobile application is available in a Web browser. See the Sybase Unwired Accelerator documentation for more information.

---

### Lesson 1: Turning on portal capabilities

This lesson teaches you how to turn on the portal functionality in WorkSpace mobile tooling, which is turned off by default.

- 1 Start Unwired Accelerator if it is not running. Select **Start|Programs|Sybase|Sybase WorkSpace|UA 7.0|Start UA (Tomcat)**.
- 2 Start Sybase WorkSpace if it is not running. In Windows select **Start|Programs|Sybase|Sybase WorkSpace|Sybase WorkSpace 1.5**.



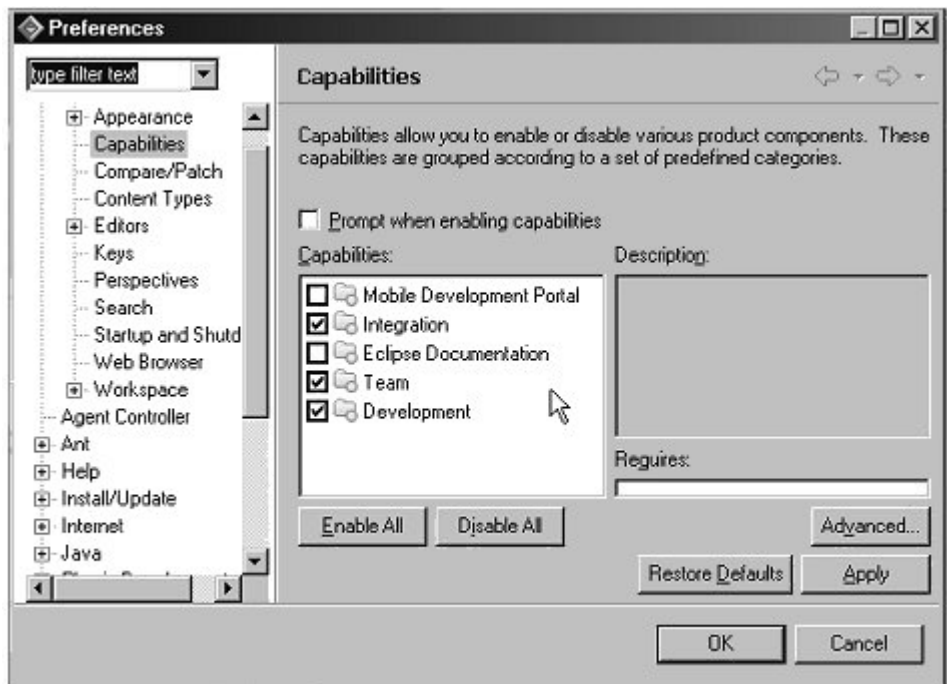
- 3 In the WorkSpace main window, select **Window|Open Perspective|Mobile Development** from the main menu bar.

---

**Note** If the Mobile Development perspective is not on the Open Perspective context menu, select **Window|Open Perspective|Other**, choose **Mobile Development** from the **Select Perspective** dialog box, and click **OK**.

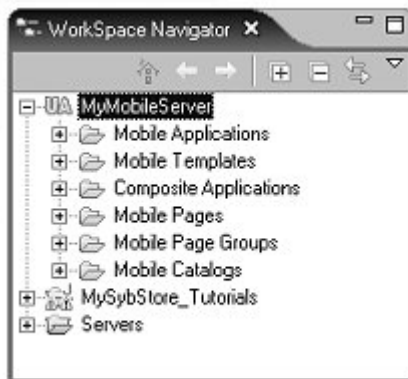
---

- 4 Select **Window|Preferences** from the main menu bar. You see the **Preferences** wizard.
- 5 In the **Preferences** tree view, click the plus sign beside the **General** category, then select **Capabilities**.



- 6 In the **Capabilities** list, select the **Mobile Development Portal** option, then click **OK**.

Several folders display under MyMobileServer in the WorkSpace Navigator. You see Mobile Pages, Mobile Page Groups, and Mobile Catalogs.



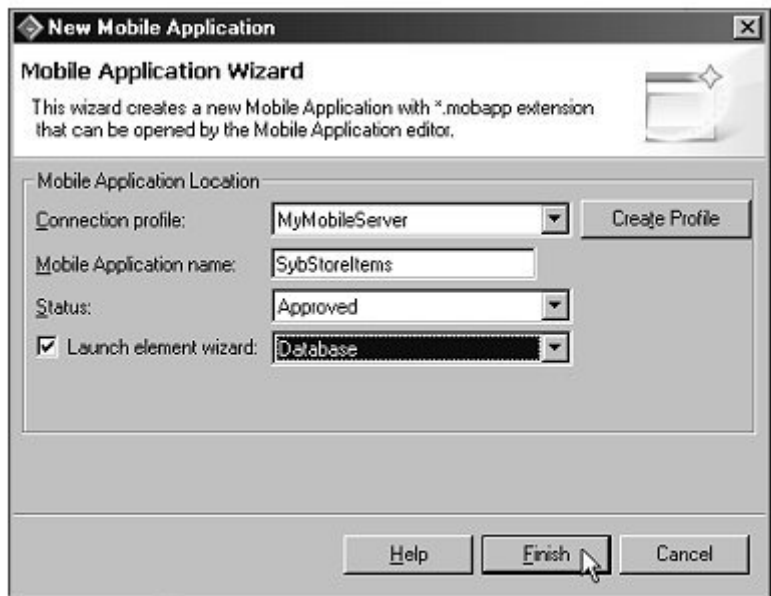
You have successfully added portal support to the mobile development tooling.

## Lesson 2: Building a simple mobile application

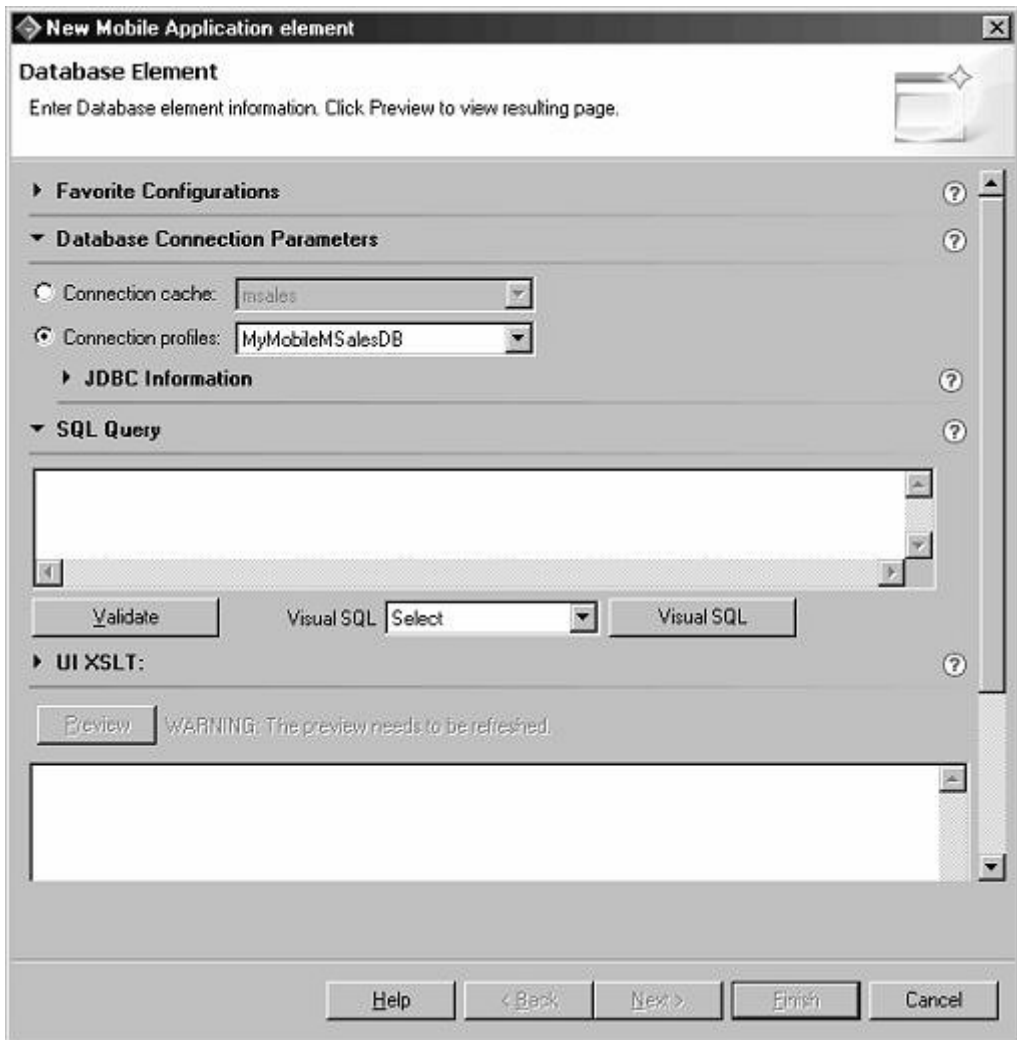
To illustrate portal functionality, this lesson teaches you how to build a simple mobile application that displays content from the `warehouse_inventory` table in the `SybStore` database.

- 1 To work with a table in the `SybStore` database, you must start the database and establish a connection to it from WorkSpace.
  - a In the **WorkSpace Navigator**, expand **MySybStore\_Tutorials/Setup/Database** and double-click **startMySybStore.bat** to start the `SybStore` database.
  - b In the **Enterprise Explorer** view, right-click the **MySybStore** connection profile and select **Connect** from the context menu.
- 2 In the WorkSpace main window, select **File|New|Mobile Application** from the main menu bar.
- 3 When the **New Mobile Application** wizard opens, complete these options:
  - **Connection Profile** – select **MyMobileServer**.
  - **Mobile Application Name** – enter `SybStoreItems`.
  - **Status** – select **Approved**.

- **Launch Element Wizard** – select this option and select **Database** as the value.

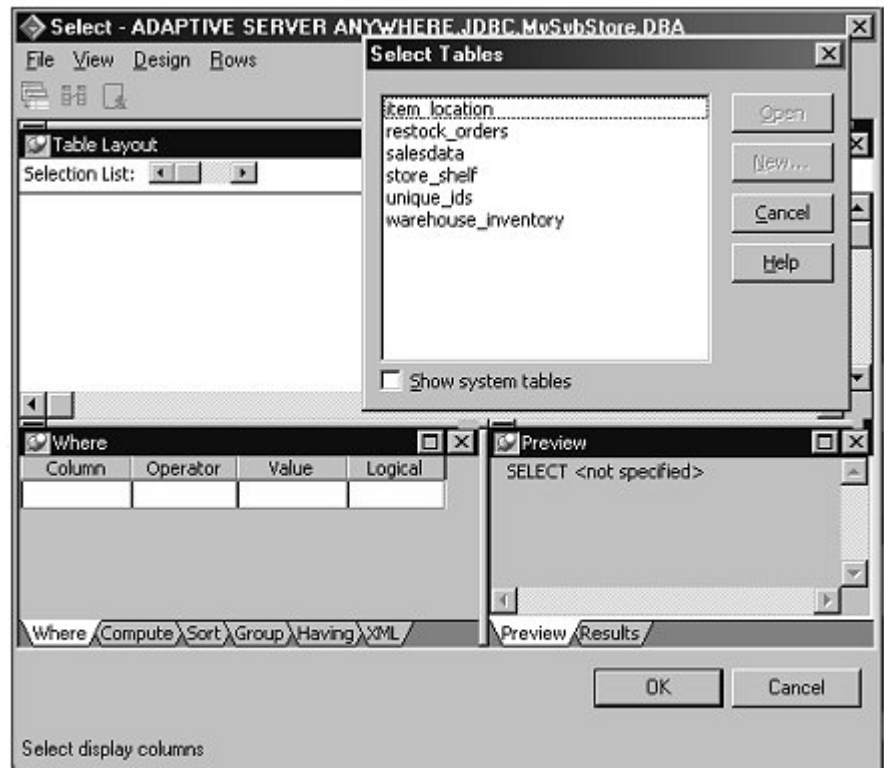


- 4 Click **Finish**. The New Mobile Application Element dialog box opens.



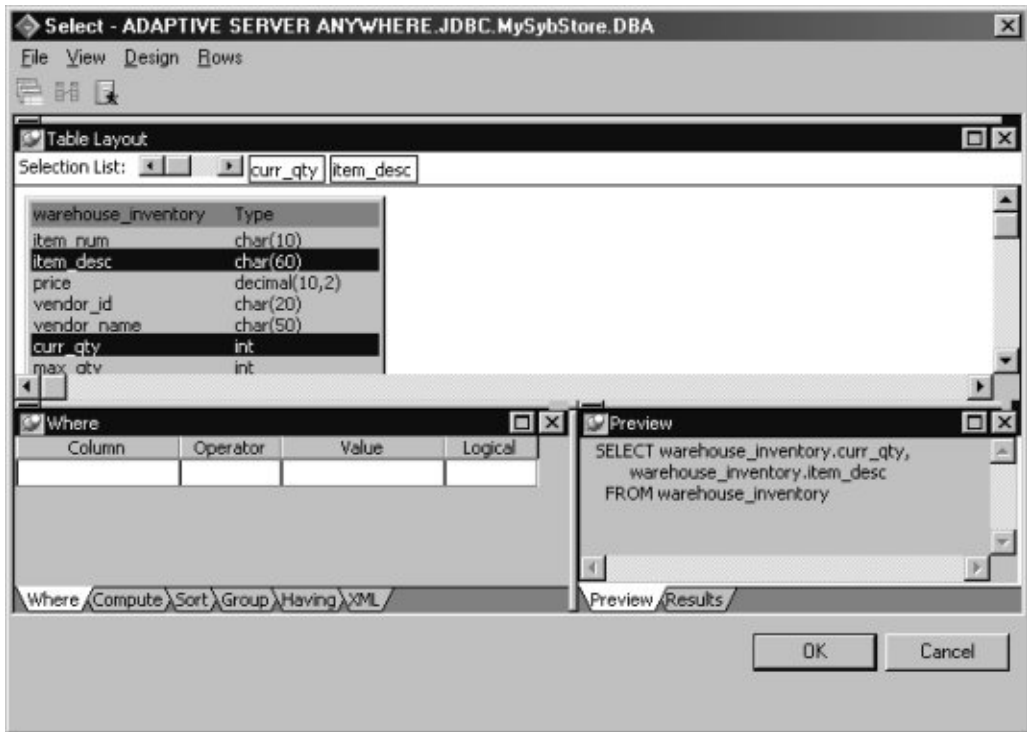
- 5 Add a SELECT statement to the mobile application. Select the **Connection Profiles** option and select **MySybStore** as the value.

- 6 Below the SQL Query pane, verify that **Select** is the value in the **Visual SQL** field, then click the **Visual SQL** button. The Visual SQL **Select** wizard opens.

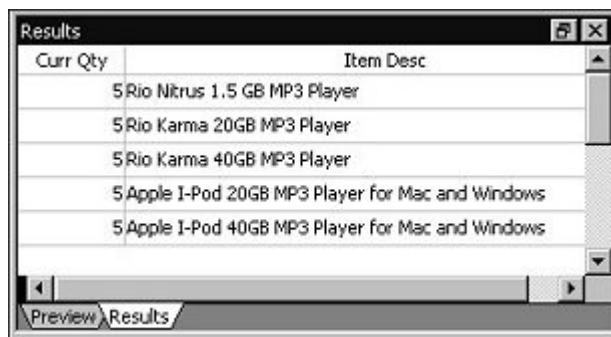


- 7 In the **Select Tables** window, select `warehouse_inventory` and click **Open**. The wizard displays three main views:
- Table Layout – to select columns.
  - Where – to create a more complex SQL statement by adding and nesting clauses. The tabs at the bottom of the view represent different clauses of a SQL statement appear at the bottom of the lower view.
  - Preview – displays a preview the of the SQL statement you are creating.

- 8 In the **Table Layout** pane, select (highlight) the `item_desc` column, then select the `curr_qty` column. These columns are added to Selection List bar and display in the Preview.



- 9 Select **Design|Execute** from the menu bar to run the query. Look at the Results tab to view the output from the SELECT query.



- 10 Click **OK** to save the statement. When you return to the New Mobile Application Element wizard, the SQL Query field is now populated.

Because the data will be displayed on a mobile device, verify that the columns are short and named appropriately.

- 11 In the **SQL Query** pane, change the SQL statement to the following text so that the description is a maximum of 30 characters and the column names are more appropriate.

```
SELECT substring(warehouse_inventory.item_desc,1,30) "Item
Description", warehouse_inventory.curr_qty "Curr Qty" FROM
warehouse_inventory
```

- 12 Click **Validate**. When you see a message that the SQL query validated successfully, click **OK**.

---

**Note** If the SQL query does not validate successfully, repeat steps 11 and 12, and verify that the information is entered correctly.

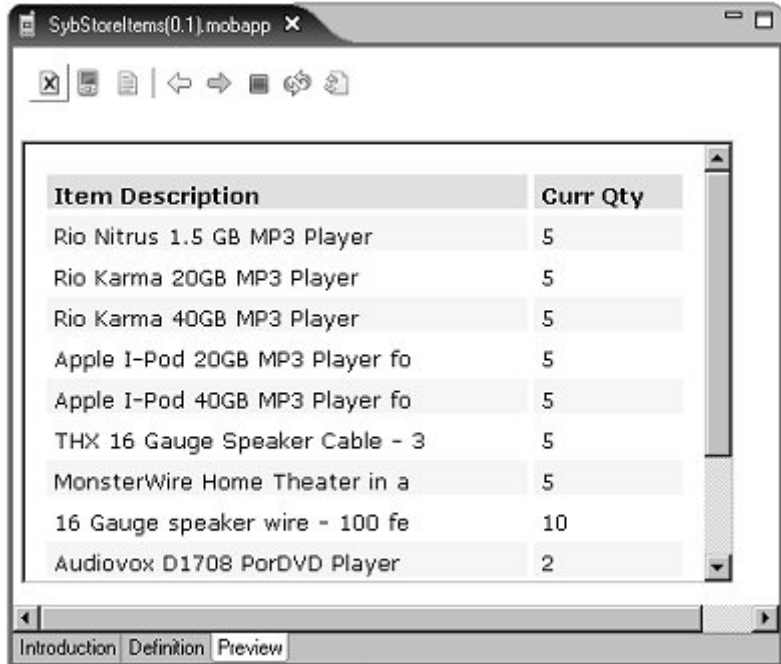
---

- 13 Click **Preview**.



- 14 Click **Next**.
- 15 When the **Rules** dialog box of the wizard opens, select the **Records Contain Labels** option and click **Finish**. You return to the mobile application editor.

- 16 Select **File|Save** from the WorkSpace main menu to save the mobile application.
- 17 Select the **Preview** tab to see a preview of the new mobile application.



- 18 Close the mobile application by clicking the “X” on the application’s title tab.

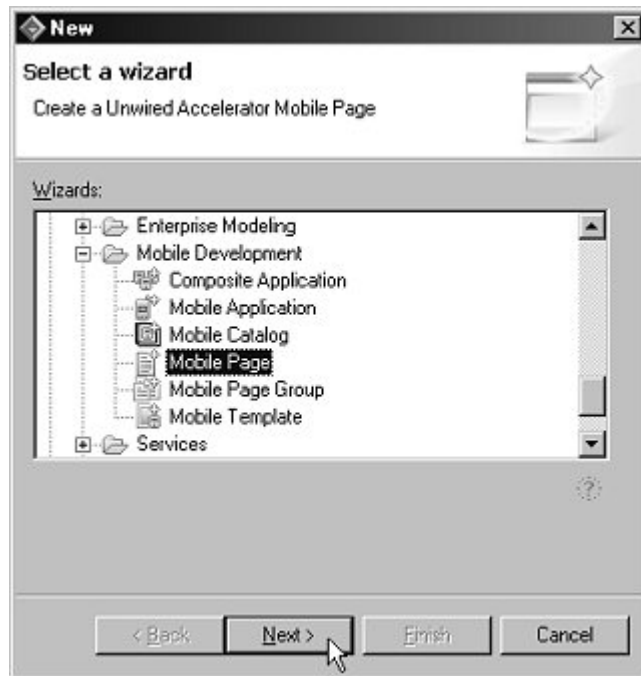
### Lesson 3: Placing the mobile application on a Web page

This lesson shows you how to place the new mobile application on a Web page.

- 1 Select **File|New|Other** on the main menu bar to open the **New** wizard.



- 2 Select **Sybase|Mobile Development|Mobile Page** and click **Next**.



- 3 When the **New Mobile Page** dialog box opens, complete these options:

- **Connection Profile** – select **MyMobileServer**.
- **Mobile Page Name** – enter `SybStoreItemsPage`.
- **Status** – select **Approved**.

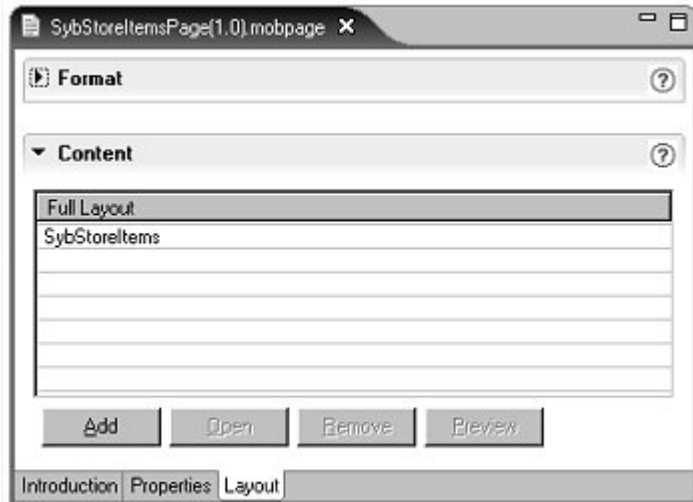
Click **Finish**.

- 4 Select the **Layout** tab to create the new mobile page's format.



- 5 Because there is only one mobile application, select **Full Layout**, then click **Add**.

- 6 Select the mobile application you want added to the page. When the **Mobile Application Search** wizard opens, click **Search** to display all approved mobile applications, select the **SybStoreItems**, and click **OK**.



The name of the mobile application you selected displays in the **Content** portion of the editor.

- 7 Select **File|Save** from the Workspace main menu to save the new Web page. The page displays in the **Mobile Pages/Approved** folder in the **Workspace Navigator**.
- 8 Close the page by clicking the “X” by the mobile application page’s tab title.

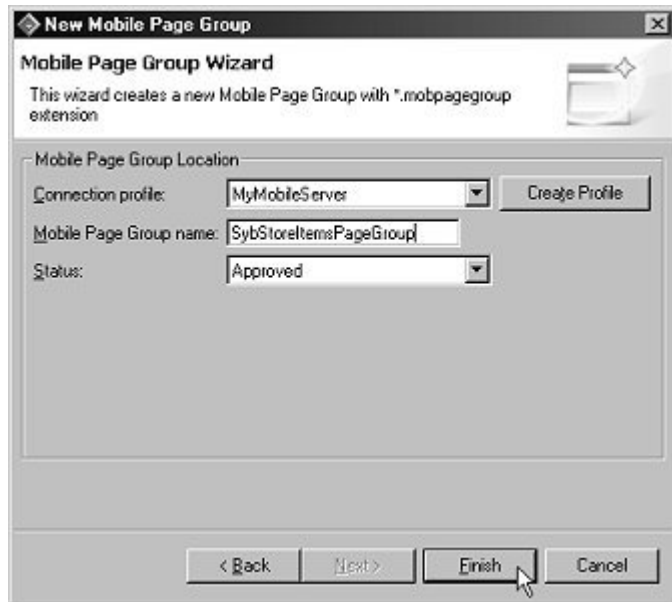
You have finished placing the mobile application on a newly created Web page. In the following lessons will use this page in a portal.

## Lesson 4: Creating and deploying a page group

This lesson teaches you how to add your Web page to a page group. Only pages that belong to a page group can be deployed to a portal.

- 1 Select **File|New|Other** from the Workspace main menu bar to open the wizard.
- 2 Select **Sybase/Mobile Development/Mobile Page Group** and click **Next**.
- 3 When the **Mobile Page Group Wizard** opens, complete these options:

- **Connection Profile** – select **MyMobileServer** as the connection profile to use when deploying this page group.
- **Mobile Page Group Name** – enter `SybStoreItemsPageGroup`.
- **Status** – select **Approved** as the status to give this page group.

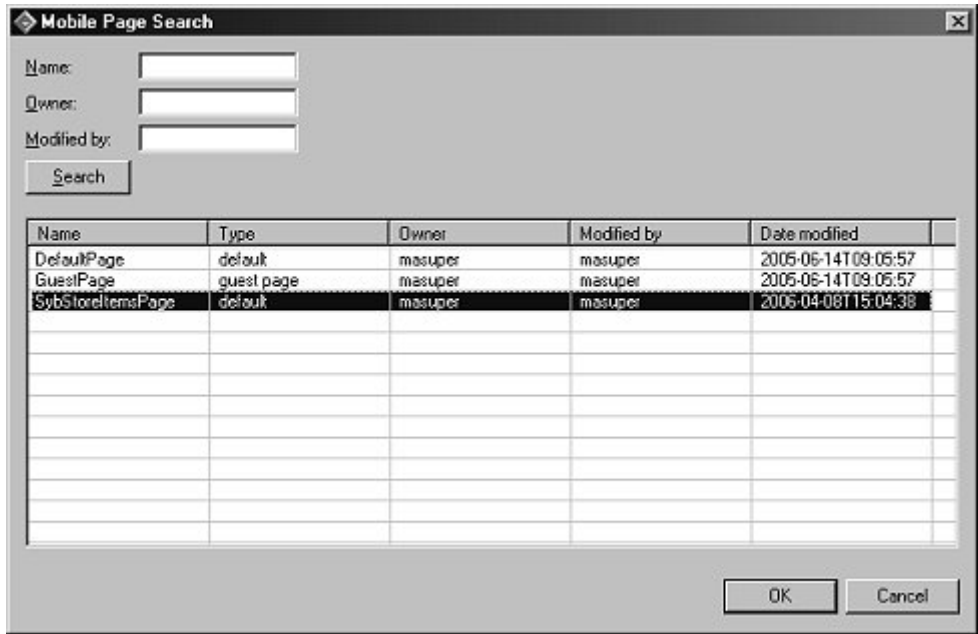


Click **Finish**.

You have created a new mobile page group. Now you will add the page to the new page group.

- 4 Select the **Layout** tab.
- 5 Click **Add** to open the **Mobile Page Search** wizard.

- 6 Click **Search** to display all approved mobile pages.



- 7 Select **SybStoreItemsPage** and click **OK**.
- 8 Select **File|Save** from the main menu to save the page. The page now appears in the **Mobile Pages/Approved** folder.
- Now you can deploy the new page group, which allows access to the mobile application by browsing the portal.
- 9 In the **WorkSpace Navigator**, expand the **MyMobileServer/Mobile Page Groups/Approved** folder.
- 10 Right-click **SybStoreItemsPageGroup** and select **Deploy** from the context menu to deploy the new page group that contains the new page, which contains the new mobile application.

You have finished placing the page in a new page group and deployed the newly created objects. We can now access them via browsing the portal.

## Lesson 5: Browsing to view the mobile application

This lesson illustrates how to use a Unwired Accelerator-supported mobile device or desktop computer to browse to the mobile application that you deployed in the preceding lesson.

- 1 Start the browser application on your desktop or mobile device and go to your Unwired Accelerator server URL.

- For a mobile device, enter:

```
http://<server>.<domain>:4040/onepage/mp.jsp
```

- For a desktop browser, enter:

```
http://<server>.<domain>:4040/onepage/mpindex.jsp
```

If you are using a mobile device, the Unwired Accelerator log in page appears.



- 2 Log in to Unwired Accelerator (**Login Name** – masuper, **Password** – m8super). You see the default page groups.

This following example illustrates one page group. However, a live portal can have multiple page groups that also have multiple mobile applications.



- 3 Browse to the SybStoreItems link. You see the mobile application that you created in the earlier lessons.

---

**Note** In an actual development cycle, you could set up a master/detail relationship for the data so that you could browse to more specific information. This type of adjustment is easy to make with the Mobile Development tooling. See Unwired Accelerator in the Sybase WorkSpace online bookshelf for more information.

---



You have completed the tutorial and learned how to create and deploy a mobile application to a Web browser.